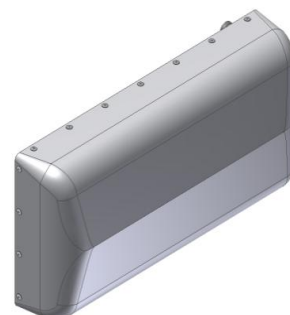


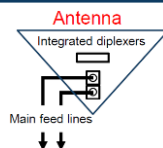
X-pol Dual Band Antenna, 698–960/1695–2700 MHz***Split Beam 34° Horizontal Pattern***

- Split beam, 2-sector MIMO Stadium Antenna reduces sector overlap
- Separate housing and reflector construction optimizes RF performance while maximizing mechanical strength
- Good passive intermodulation (PIM) performance reduces harmful interference
- Perfect for stadium/arena /special event coverage
- Includes flexible stadium bracket
- Suitable for WCS/LTE/CDMA/UMTS/GSM/WiMAX (Neutral Host)
- Optional internal diplexers reduce external cabling and improve aesthetics

**Includes integrated diplexers**

Reduces mainline cables

Eliminates external tower devices

**Electrical specifications**

Frequency band, MHz	698–824	824–960	1695–1920	1920–2200	2200–2360	2360–2700
Horizontal beamwidth, 3 dB points	36°	30°	40°	36°	31°	29°
Gain, dBi	9.2	10.6	10.7	10.5	11.2	11.7
Vertical beamwidth, 3dB points	65°	56°	65°	66°	57°	53°
Front-to-back at 180°, dB	> 20		> 28			
Polarization	+/-45°		+/-45°			
Electrical downtilt	0°		0°			
VSWR / return loss, dB, maximum	1.5:1/14		1.5:1/14			
Isolation between ports, dB, minimum	25		25			
Intermodulation (2 x 20 W), IM3, dBc, maximum	-153		-153			
Impedance, ohms	50		50			
Maximum power per connector, CW (W)	250 @ 800 MHz		125 @ 1900 MHz			

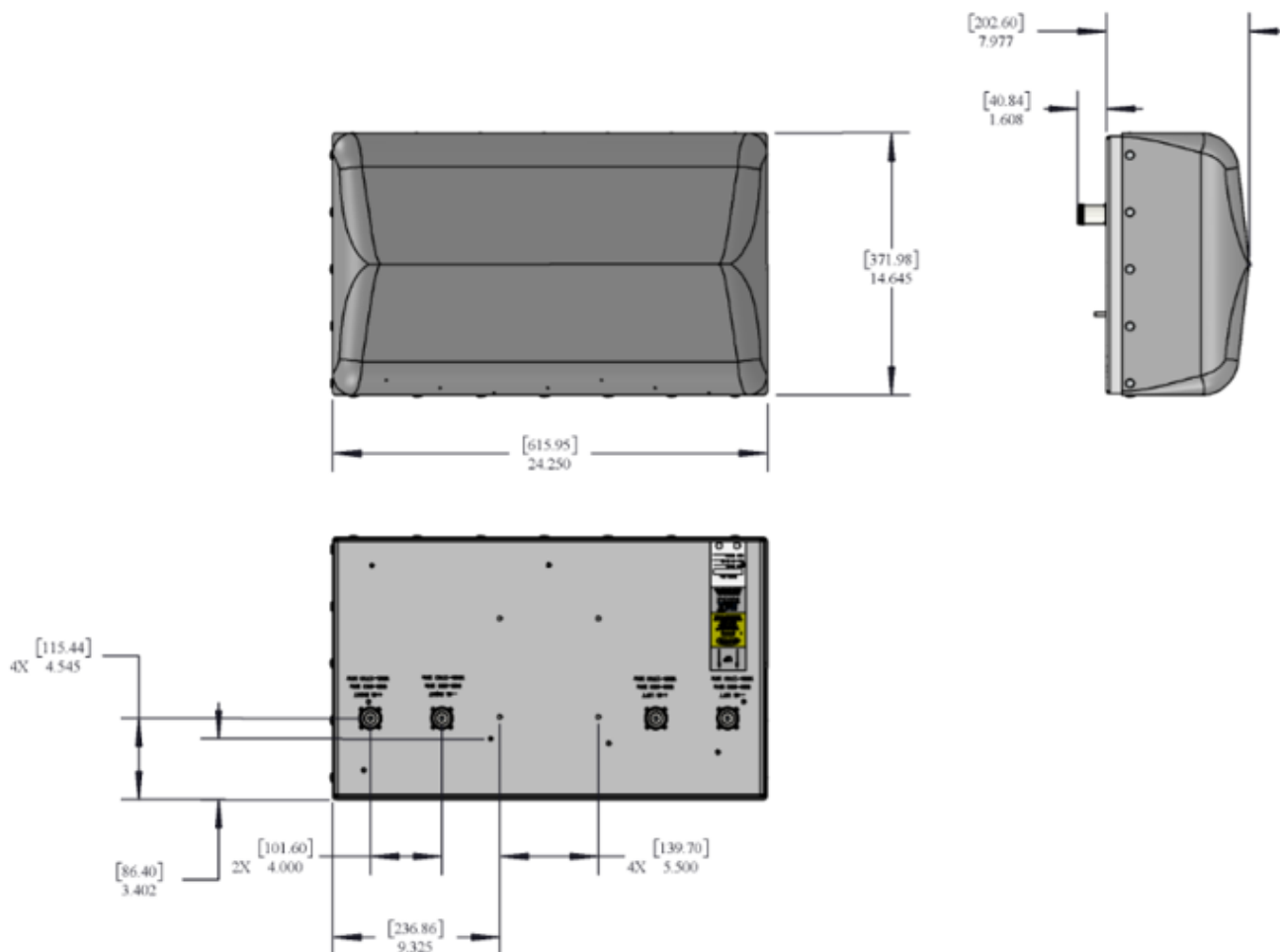
Mechanical specifications

Dimensions, length/width/depth	14.6/24.3/7.1 in (372.0/616.0/180.6 mm)
Connector (quantity) type	(4 or 8) 7-16 DIN Female
Connector torque	220-265 lbf-in (23-30 Nm)
Connector location	Back
Antenna weight	15.0 lb (6.8 kg)
Bracket weight	5.0 lb (2.3 kg)
Standard bracket kit	P/N 919050 (Included)
Mechanical down tilt range	+/- 35° Lateral & +/- 55° Vertical
Radome material	High Strength Luran, UV Stabilized, ASTM D1925
Wind survival	120 mph (193 km/h)
Front wind load @ 100 mph	59.4 lbf (264.3 N) @100 mph
Equivalent flat plate @ 100 mph	1.18 sq ft (c=2) @ 100 mph

Order information

Model	Description
XGU-MB-134-I	X-Pol dual band, 0° electrical downtilt with four (4) DIN connectors, w/ internal duplexers
919055	Optional inverted mounting kit for 4.0-10.0 in. OD pole.
91900313	Optional bracket kit for extended horizontal and vertical tilt ranges.

Mechanical Outline Drawing, XGU-MB-134-I (diplexed)



Examples of standard stadium bracket kit 919050 installation

Note: For mounting details, refer to installation drawing, P/N 919050, on the JMA website Antenna Matrix.

