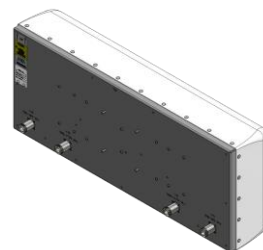
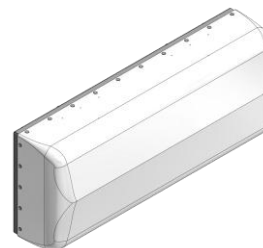


X-pol Dual Band Antenna, 698-960/1695-2700 MHz

36", 24° horizontal beamwidth

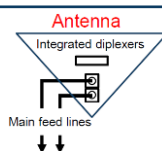
Fixed electrical tilt

- Fast Roll-Off (FRO) improves intra- and inter-cell SINR
- Separate housing and reflector construction optimizes RF performance while maximizing mechanical strength
- Good passive intermodulation (PIM) performance reduces harmful interference
- Integrated diplexers minimizes cabling costs and improves aesthetics
- Included multi-position stadium bracket accommodates most mounting surfaces
- Suitable for LTE/CDMA/UMTS/GSM

**Includes integrated diplexers**

Reduces mainline cables

Eliminates external tower devices

**ELECTRICAL SPECIFICATIONS**

Frequency band, MHz	698-745	746-896	897-960	1695-2180	2181-2360	2496-2700
Horizontal beamwidth, 3 dB points† (average)	26°	24°	22°	26°	23°	20°
Gain, dBi	11.4	11.2	11.1	12.3	12.5	13.0
Vertical beamwidth, 3 dB points (average)	55°	49°	48°	64°	52°	50°
Azimuth sidelobe suppression, typical, dB	>18	>18	>18	>18	>18	>18
VSWR / return loss, dB, maximum	1.7/11.7	1.5/14.0	1.7/11.7	1.5/14.0	1.7/11.7	1.7/11.7
Polarization	+/-45°			+/-45°		
Electrical down tilt	0°			0°		
Isolation between ports, dB, minimum	>25			>25		
Intermodulation (2 x 20 w), IM3, dBc, maximum	-153			-153		
Impedance, ohms	50			50		
Maximum power per connector, CW (w)	250			125		

†Beamwidth refers to antenna in orientation shown. Upright installation will reverse H/V beamwidths.

MECHANICAL SPECIFICATIONS

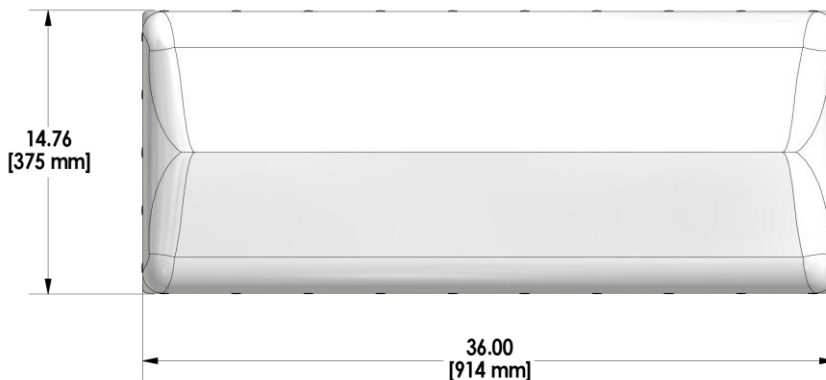
Dimensions, length/width/depth	14.8/36.0/8.0 in. (375/915/203 mm)
Connector (quantity) type	(2) 7-16 DIN female for diplexed and (4) for non-diplexed
Connector torque	220-265 lbf·in (23-30 N·m)
Connector location	Back
Antenna weight	18.0 lbs (8.2 kg)
Bracket weight	5.0 lbs (2.3 kg)
Standard bracket kit	919050 (included)
Mechanical down tilt range	+/- 20° lateral (azimuth) and +/- 55° vertical (up/down tilts)
Radome material	High strength Luran®, UV stabilized, ASTM D1925
Wind survival	120 mph (193 km/h)
Front wind load @ 100mph	90.8 lbf (404 N)
Equivalent flat plate @ 100 mph	1.81 sq ft (c=2)

ORDER INFORMATION

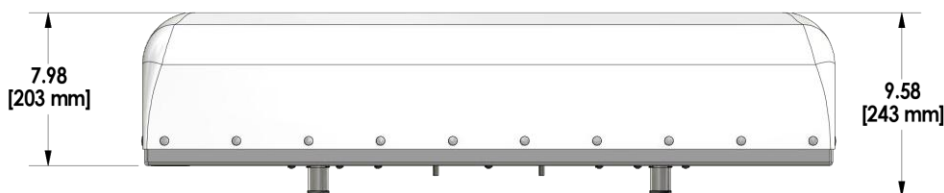
MODEL	DESCRIPTION
XGU-FRO-124-I	3' X-pol LB/HB 24° HBW, 0°/0° EDT with two DIN connectors and integrated diplexers
XGU-FRO-124	3' X-pol LB/HB 24° HBW, 0°/0° EDT with four DIN connectors
919055	Optional inverted mounting kit for 4.0-10.0 in. OD pole.
91900313	Optional bracket kit for extended horizontal and vertical tilt ranges.

Mechanical Outline Drawing: XGU-FRO-124-I (internally diplexed)

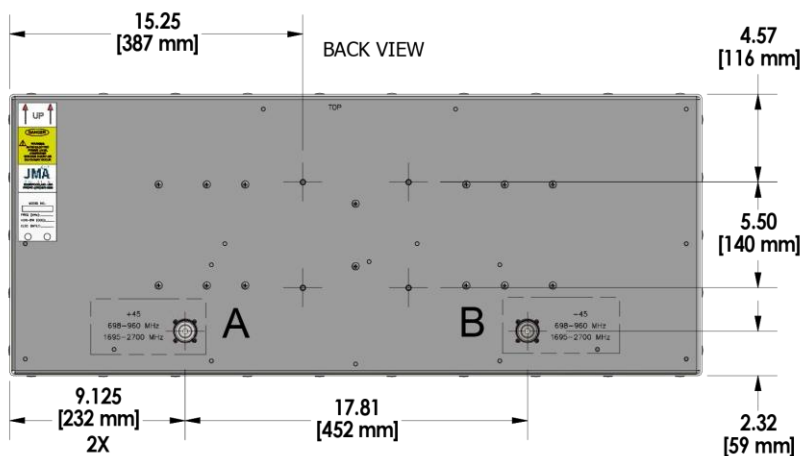
FRONT VIEW

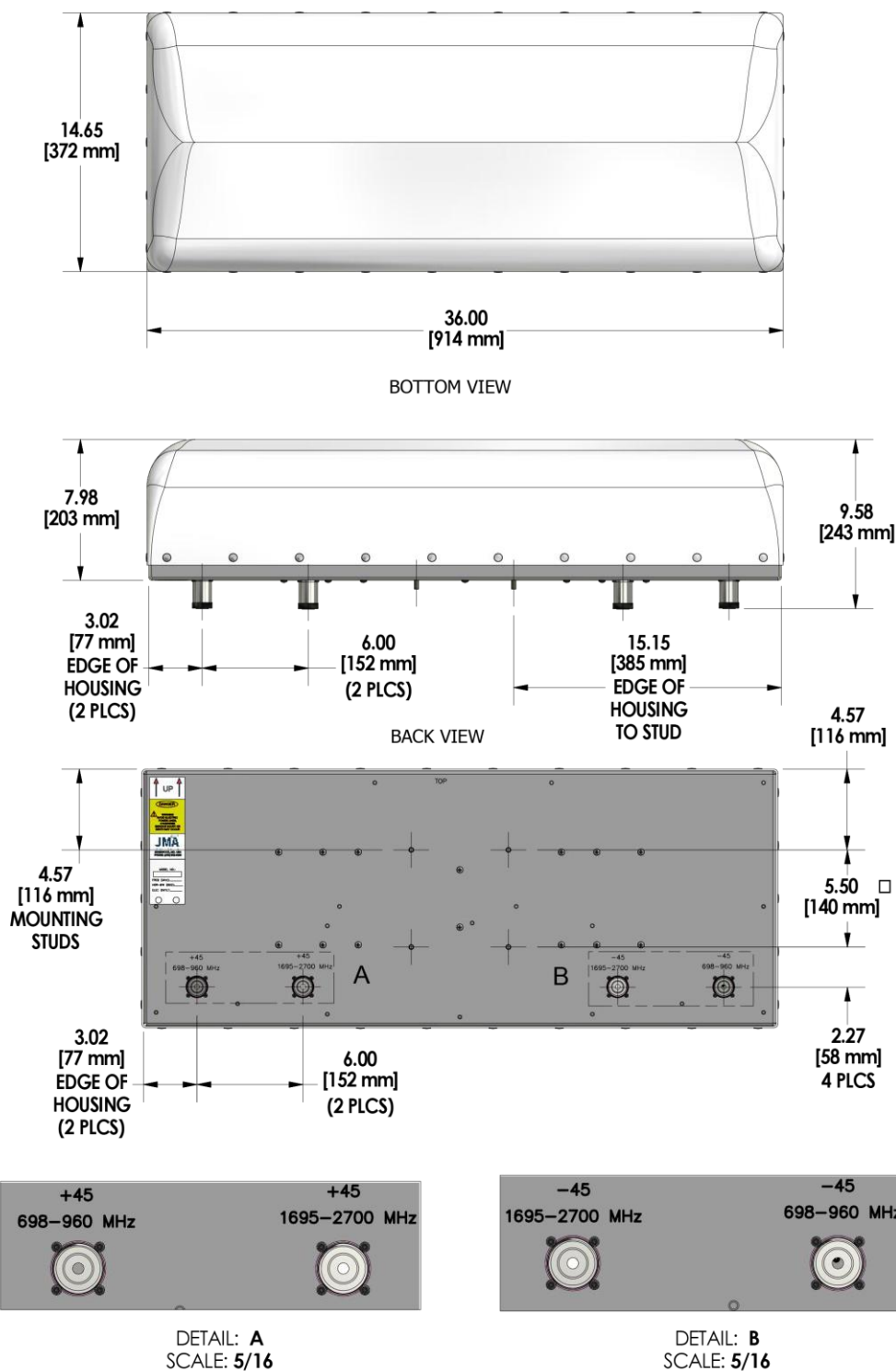


BOTTOM VIEW



BACK VIEW

**DETAIL A**
SCALE 5/16**DETAIL B**
SCALE 5/16

Mechanical Outline Drawing: XGU-FRO-124 (non diplexed)

Examples of standard stadium bracket kit 919050 installation

Note: For mounting details, refer to installation drawing, P/N 919050, on the JMA website Antenna Matrix.

