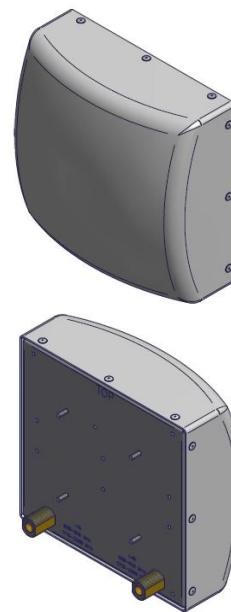


X-pol Dual Band Antenna, 698-960/1695-2700 MHz  
Horizontal beamwidth

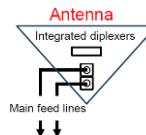
- 698-960 MHz low-band and 1695-2700 MHz high-band
- Widely used stadium antenna
- Included multi-position stadium bracket accommodates most mounting surfaces
- Suitable for WCS/LTE/CDMA/UMTS/GSM/WiMAX (Neutral Host)



#### Available with Integrated Diplexers

Reduces RF cables

Eliminates external devices



## ELECTRICAL SPECIFICATIONS

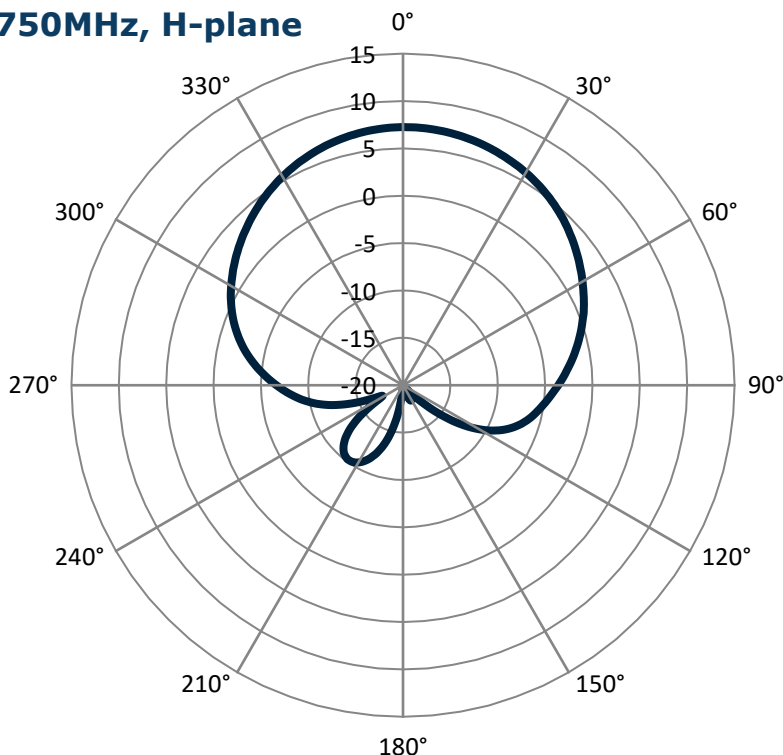
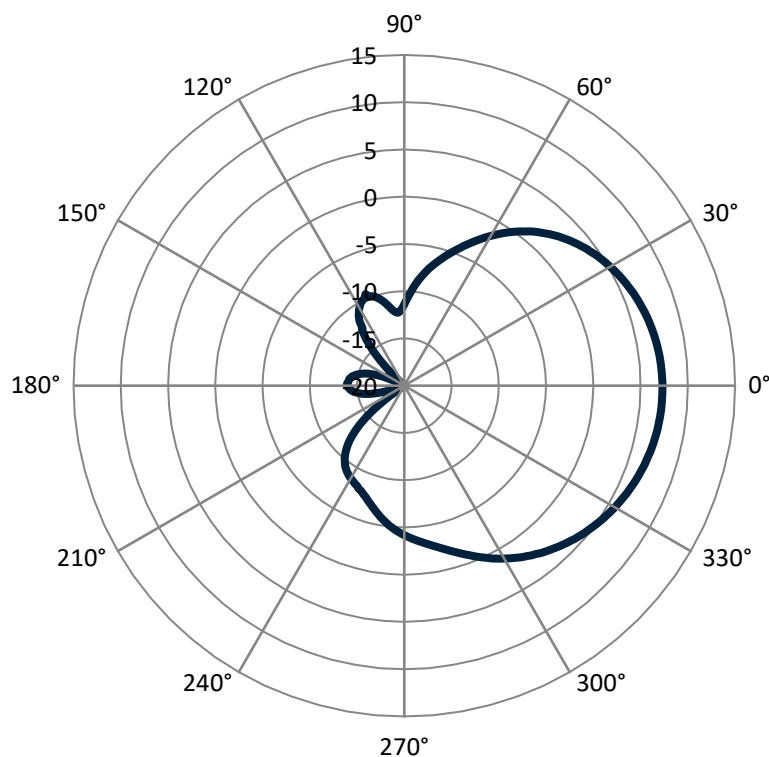
Frequency Band, MHz	698-824	824-960	1695-1920	1920-2200	2200-2360	2360-2700
Horizontal beamwidth, 3 dB points	86°	77°	65°	66°	57°	53°
Gain, dBi	7.1	7.6	10.7	10.5	11.2	11.7
Vertical beamwidth, 3dB points	78°	68°	40°	36°	31°	29°
Front-to-back at 180°, dB	> 20		> 28			
Polarization	+/-45°		+/-45°			
Electrical downtilt	0°		0°			
VSWR / return loss, dB, maximum	1.5:1/14		1.5:1/14			
Isolation between ports, dB, minimum	28		26			
Intermodulation (2 x 20 w), IM3, dBc, maximum	-153		-153			
Impedance, ohms	50		50			
Maximum power per connector, CW (w)	250 @ 800 MHz		125 @ 1900 MHz			

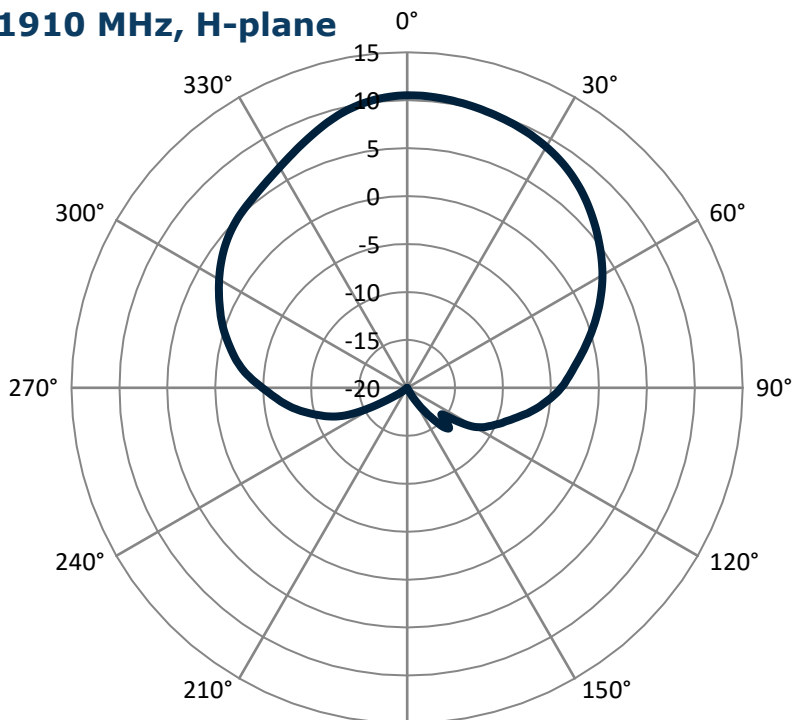
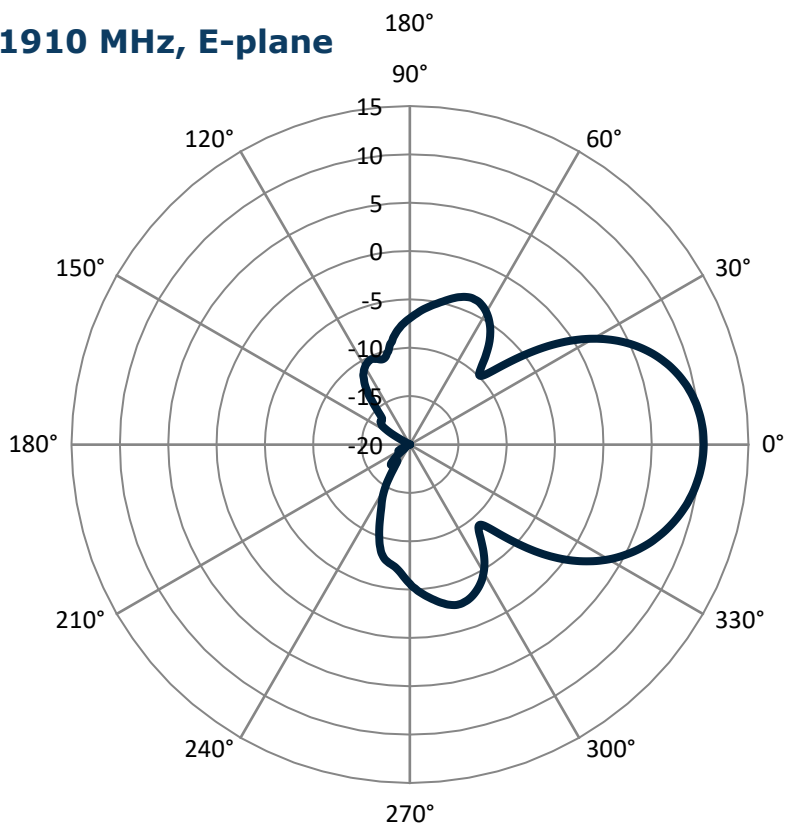
**MECHANICAL SPECIFICATIONS**

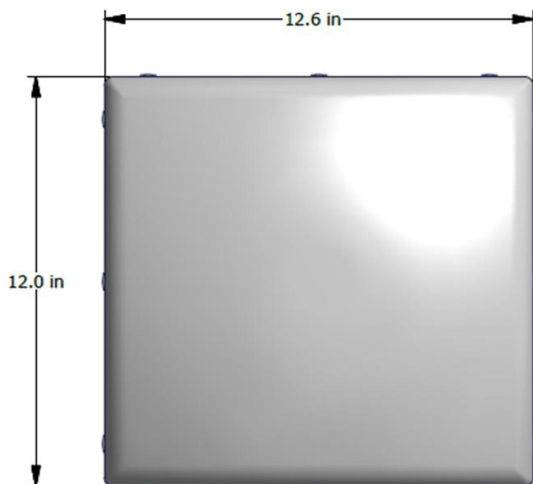
Dimensions, length/width/depth	12.0/12.6/5.6 in. (304.8/320.0/142.2 mm)
Connector (quantity) type	(2 or 4) 7-16 DIN female
Connector torque	220-265 lbf·in (23-30 N·m)
Connector location	Back
Antenna weight	10.8 lb (4.9 kg)
Bracket weight	5.4 lb (2.4 kg)
Standard bracket kit	P/N 919050
Mechanical down tilt range	+/- 35° lateral & +/- 55° vertical
Radome material	High-strength Luran®, UV stabilized, ASTM D1925
Wind survival	150 mph (241.4 km/h)
Front wind load @ 100 mph	26.0 lbf (115.8 N)
Equivalent flat plate @ 100 mph	0.52 sq-ft (c=2)

**ORDER INFORMATION**

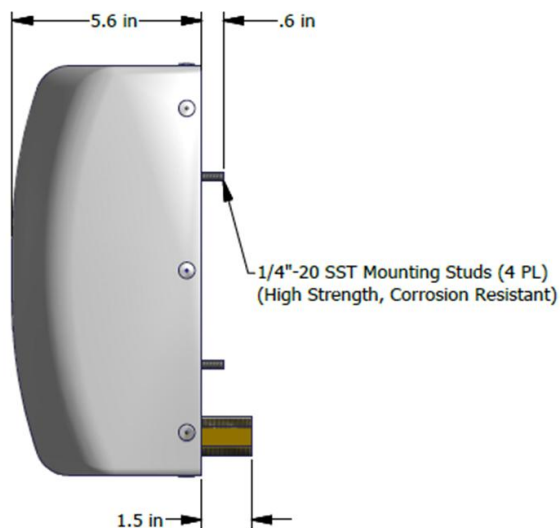
MODEL	DESCRIPTION
XGU-165	X-Pol dual band, 0° electrical down tilt with four DIN connectors.
XGU-165-I	X-Pol dual band, 0° electrical down tilt with two DIN connectors and integrated diplexers.
919055	Optional inverted mounting kit for 4.0-10.0 in. OD pole.
91900313	Optional bracket kit for extended horizontal and vertical tilt ranges.

**Pattern Plot: 750MHz, H-plane****Pattern Plot: 750 MHz, E-plane**

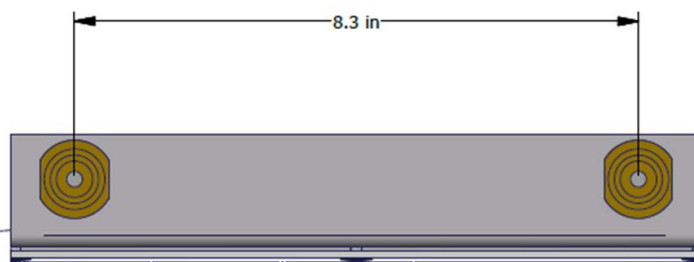
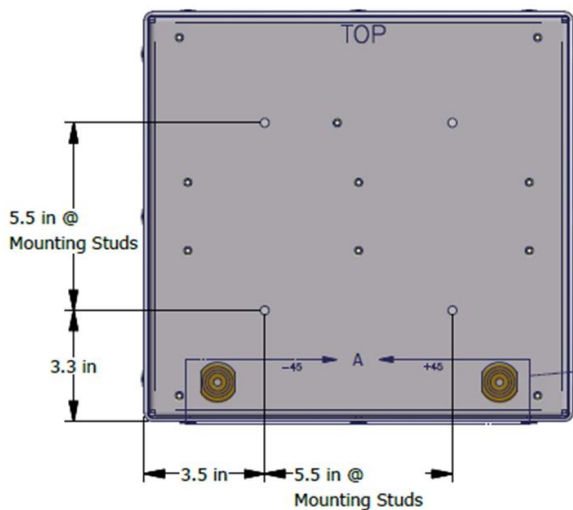
**Pattern Plot: 1910 MHz, H-plane****Pattern Plot: 1910 MHz, E-plane**

**Mechanical Outline Drawing: -I Version**

FRONT VIEW



SIDE VIEW



DETAIL A

## Examples of standard stadium bracket kit 919050 installation

Note: For mounting details, refer to installation drawing, P/N 919050, on the JMA website Antenna Matrix.

