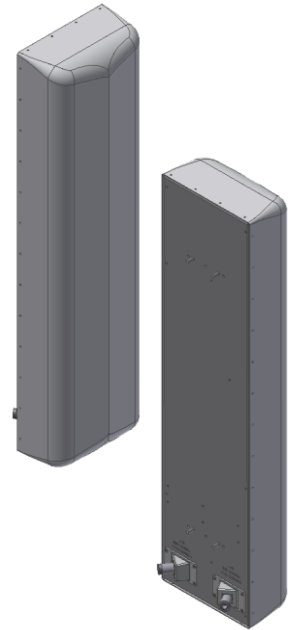


XEW-465

X-Pol Dual Band Antenna, 698-945/1695-2360 MHz,
(50.5", 65° H-Beam)

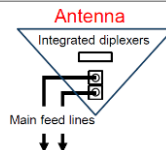
- DAS/ODAS/Small Cell Antenna
- AWS-3 & WCS Ready
- High power design
- Suitable for LTE/CDMA/UMTS/GSM
- Mechanical tilt bracket included



Includes integrated Diplexers

Reduces mainline cables

Eliminates external tower devices



ELECTRICAL SPECIFICATIONS

Frequency Band, MHz	698-824	824-945	1695-1920	1920-2200	2200-2360
Horizontal Beam Width, 3dB points	71°	66°	62°	59°	55°
Gain, dBi	13.7	14.4	16.9	17.0	16.5
Vertical Beam Width, 3dB points	17.0°	14.0°	7.3°	6.6°	6.0°
Front-to-Back at 180°, dB	>26		>28		
Upper Side Lobe Suppression, Typical, dB	<-18		<-18		
Polarization	+/-45°		+/-45°		
Electrical Down Tilt, Fixed	0°		0°		
VSWR/Return Loss, dB, Maximum	1.7:1/-11.8		1.7:1/-11.8		
Isolation Between Ports, dB, Minimum	26		26		
Intermodulation (2x20w), IM3, dBc, Maximum	-150		-150		
Impedance, ohms	50		50		
Maximum Power Per Connector, CW	500 @ 800 MHz		250 @ 1900 MHz		

MECHANICAL SPECIFICATIONS

Dimensions, Length/Width/Depth	50.5/12.5/7.1 in. (1283/318/180mm)
Connector (Quantity)	(2) 7-16 DIN Female
Connector Torque	220-265 lbf-in (23-30 N-m)
Connector Location	Back
Antenna Weight	27.0 lbs (12.3 kg)
Bracket Weight	13.2 lb. (6.0 kg)
Standard Bracket Kit	CSS P/N 919011 (Included)
Mechanical Down Tilt Range	0-12°
Radome Material	High Strength Luran, UV Stabilized, ASTM D1925
Wind Survival	150 mph (241km/h)
Front Wind Load	127.1 lbf (565.3 N) @100mph
Equivalent Flat Plate	2.53 sq-ft (c=2) @ 100mph

ORDER INFORMATION

MODEL	DESCRIPTION
XEW-465-IP	X-Pol dual band antenna with two back DIN connectors with integrated diplexers