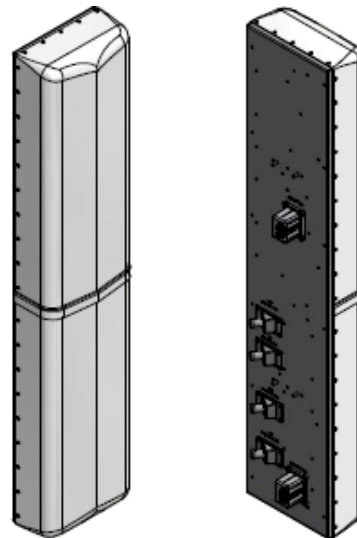


X-pol dual band, (1) 698-896 (1) 1710-2170 MHz, 72", 80° H-beam

Variable E-tilt, RET

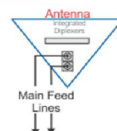
- Macro cell antenna
- Suitable for LTE/CDMA/UMTS/GSM
- AISG v2.0 RET control
- Optional internal diplexers



#### Available with Integrated Diplexers

Reduces mainline cables

Eliminates external tower devices



## ELECTRICAL SPECIFICATIONS

| Frequency band, MHz                         | 698-824        | 824-896 | 1695-1880     | 1850-1990 | 1920-2180 |
|---|----------------|---------|---------------|-----------|-----------|
| Horizontal beamwidth, 3 dB points           | 85°            | 89°     | 79°           | 78°       | 76°       |
| Gain, dBi                                   | 14.9           | 14.6    | 16.5          | 16.8      | 17        |
| Vertical beamwidth, 3 dB points             | 12.2°          | 10.5°   | 5.9°          | 6.9°      | 6.0°      |
| Front-to-back at 180°, dB                   | > 28           |         | > 28          |           |           |
| Upper sidelobe suppression, typical, dB     | 18             |         | 18            |           |           |
| Polarization                                | +/-45°         |         | +/-45°        |           |           |
| Electrical downtilt (see Order Information) | 0-10° or 4-14° |         | 0-6° or 4-10° |           |           |
| VSWR / return loss, dB, maximum             | 1.5:1/-14.0    |         | 1.5:1/-14.0   |           |           |
| VSWR / return loss, dB, max. "ipb" option   | 1.6:1/-12.7    |         | 1.6:1/-12.7   |           |           |
| Isolation between ports, dB, minimum        | 28             |         | 28            |           |           |
| Intermodulation (2 x 20 w), IM3, dBc        | -150           |         | -150          |           |           |
| Impedance, ohms                             | 50             |         | 50            |           |           |
| Maximum power per connector, CW (w)         | 500            |         | 250           |           |           |

**MECHANICAL SPECIFICATIONS**

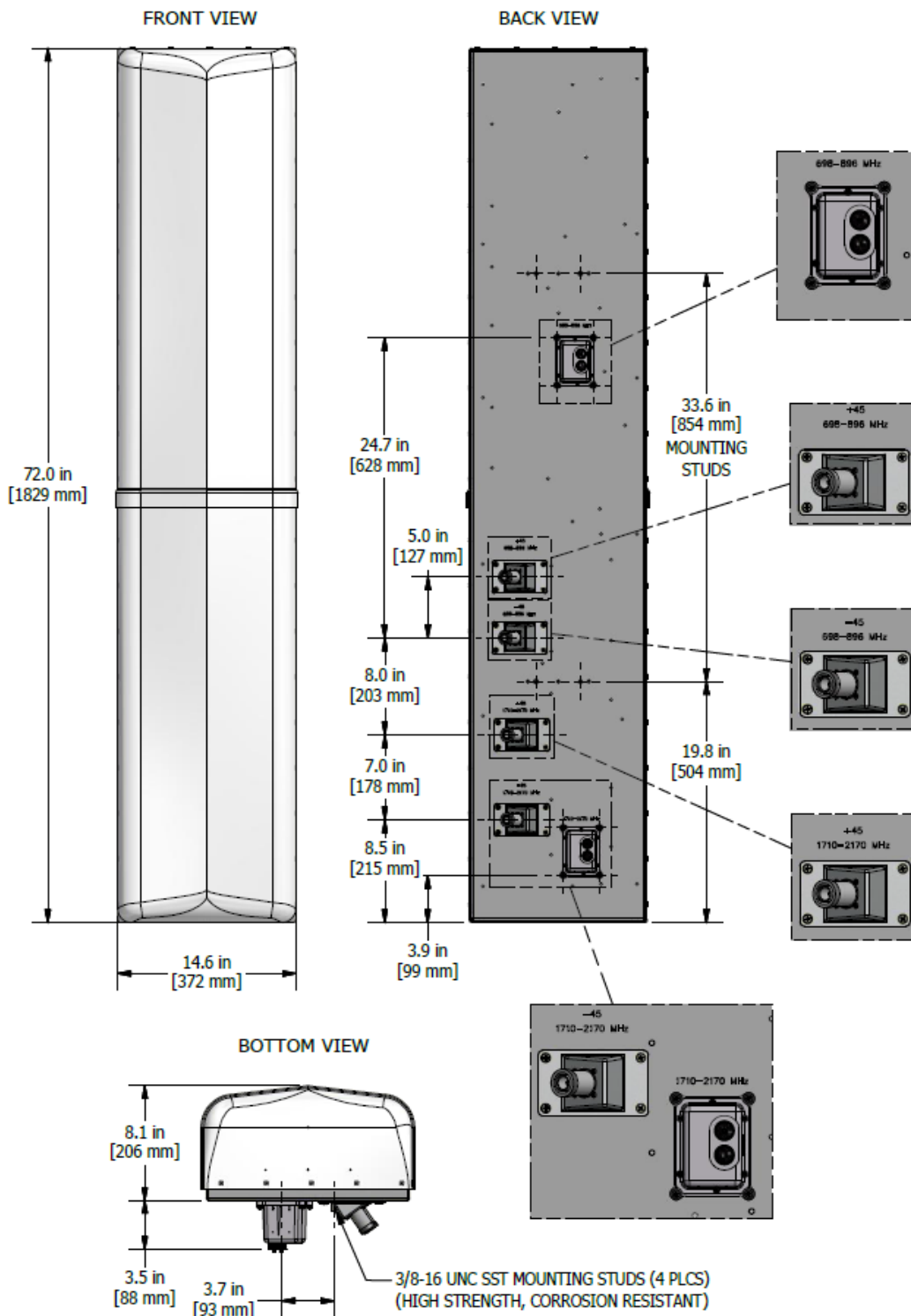
|                                 |  |
|---------------------------------|--|
| Dimensions, length/width/depth  | 72/14.6/8.1in. (1829/372/206 mm)                             |
| Connector (quantity)            | (4) 7-16 DIN female (2) 7-16 DIN female for diplexed version |
| Connector torque                | 220-265 lbf·in (23-30 N·m)                                   |
| Connector location              | Back or bottom (for internally diplexed version)             |
| Antenna weight                  | 38.2 lb (17.32 kg)   |
| Bracket weight                  | 13.2 lb  |
| Standard bracket kit            | 919011 (included)  |
| Mechanical downtilt range       | 0-12°  |
| Radome material                 | High strength Luran®, UV stabilized, ASTM D1925              |
| Wind survival                   | 150 mph (241 km/h)   |
| Front wind load @ 100 mph       | 211.6 lbf (941.4 N)  |
| Equivalent flat plate @ 100 mph | 4.22 sq ft (c=2)   |

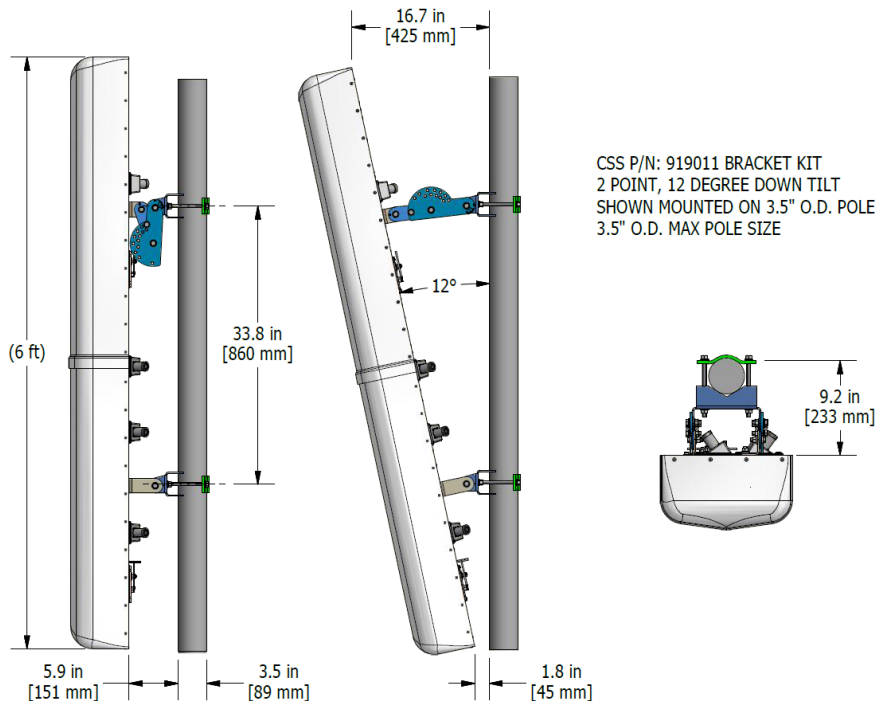
**RET INFORMATION**

|                        |                  |
|------------------------|------------------|
| Model                  | RET-200          |
| Mounting location      | Rear of antenna  |
| Weight                 | 1.2 lb (0.54 kg) |
| Communication Standard | AISG 2.0         |
| Control System         | PCU-220          |

**ORDER INFORMATION**

| MODEL             | DESCRIPTION  |
|-------------------|--|
| X7CAP-680-VR0     | Remote motor adjust variable E-tilt, EDT 0-10° low band and 0-6° high band, with 4 back connectors                             |
| X7CAP-680-VR0-IPB | Remote motor adjust variable E-tilt, EDT 0-10° low band and 0-6° high band, with 2 bottom connectors with integrated diplexer  |
| X7CAP-680-VR4     | Remote motor adjust variable E-tilt, EDT 4-14° low band and 4-10° high band, with 4 back connectors                            |
| X7CAP-680-VR4-IPB | Remote motor adjust variable E-tilt, EDT 4-14° low band and 4-10° high band, with 2 bottom connectors with integrated diplexer |
| 919036            | Optional bracket kit, 2-point, 12 deg D-tilt, for 4.5" OD pole   |
| 992100-CA013-SC   | AISG Jumper Cable, M/F, 1.3 meters   |

**Mechanical Outline Drawing X7CAP-680-VRx**

**Standard Bracket Kit****Optional Bracket Kit**