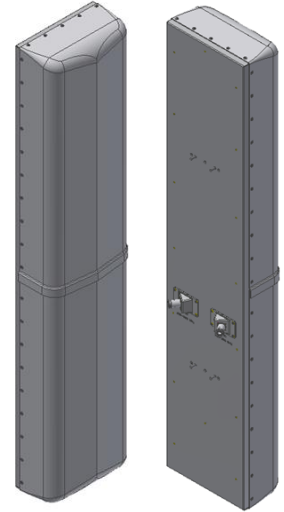


## X7C-FRO-660

X-Pol Antenna, 698-896 MHz, (72.0", 60° H-Beam)

- Fast Roll Off (FRO)
- Designed to improve SNR
- Greatly increases LTE data rates
- Macro Cell High Gain Antenna
- Highly Reliable Fixed Tilt Design
- Suitable for LTE/CDMA/UMTS/GSM
- Mechanical Tilt Bracket Included

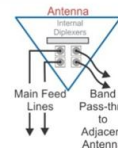


### Available with Integrated Diplexers

Reduces mainline cables

Eliminates External Tower Devices

Supports high band TMAs



## ELECTRICAL SPECIFICATIONS

Frequency Band, MHz	698-824	824-896
Horizontal Beam Width, 3dB points	58°	
Gain, dBi	16.5	17.2
Vertical Beam Width, 3dB points	11.0°	
Front-to-Back at 180°, dB	>30	
Upper Side Lobe Suppression, Typical, dB	<-18	
Polarization	+/-45°	
Electrical Down Tilt, Fixed	0, 2, 4, 6, 8, 10°	
VSWR/Return Loss, dB, Maximum (Non-IP)	1.4:1/-15.6	
VSWR/Return Loss, dB, Maximum (With-IP)	1.5:1/-14.0	
Return Loss, dB Maximum, Pass Thru	-17.7	
Isolation Between Ports, dB, Minimum	27	
Intermodulation (2x20w), IM3, dBc, Maximum	-150	
Impedance, ohms	50	
Maximum Power Per Connector, CW	500 @ 800 MHz	

## MECHANICAL SPECIFICATIONS

Dimensions, Length/Width/Depth	72.0/14.6/8.0 in. (1829/372/203mm)
Connector (Quantity)	(2 or 4) 7-16 DIN Female
Connector Torque	220-265 lbf-in (23-30 N-m)
Connector Location	Back
Antenna Weight	32.2 lbs (14.6 kg) <i>Note: Weight varies slightly based on ordering options</i>
Bracket Weight	13.2 lb. (6.0 kg)
Standard Bracket Kit	CSS P/N 919011 ( Included )
Mechanical Down Tilt Range	0-12°
Radome Material	High Strength Luran, UV Stabilized, ASTM D1925
Wind Survival	150 mph (241 km/h)
Front Wind Load	211.6 lbf (941.4 N) @100mph
Equivalent Flat Plate	4.22 sq-ft (c=2) @ 100mph

## ORDER INFORMATION

MODEL	DESCRIPTION
X7C-FRO-660- <b>x</b>	X-Pol antenna with two back DIN connectors
X7C-FRO-660- <b>x</b> -IP	X-Pol antenna with four back DIN connectors with integrated pass thru diplexers
919036	Optional Bracket Kit, 2-Point, 12deg D-tilt, For 4.5" OD Pole

**x defines the electrical tilt**