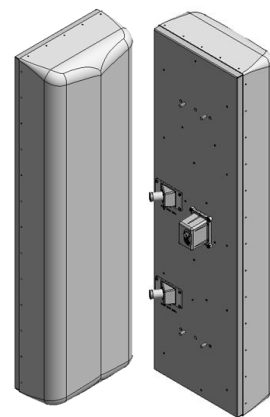


±45° polarization, 698-896 MHz, fast roll-off, 50.5" length,

60° horizontal pattern, variable E-tilt

- Fast roll-off (FRO) improves intra- and inter-cell SINR
- Separate housing and reflector construction optimizes RF performance while maximizing mechanical strength
- Good passive intermodulation (PIM) performance reduces harmful interference
- Suitable for LTE/CDMA/UMTS/GSM
- AISG 2.0 RET control



## ELECTRICAL SPECIFICATIONS

Frequency band, MHz	698-824	824-896
Horizontal beamwidth, 3 dB points	59°	56°
Gain, dBi	14.9	15.3
Vertical beamwidth, 3 dB points	17.6°	15.6°
Front-to-back at 180°, dB	>30	
Upper sidelobe suppression, dB (typical)	<-18	
Polarization	+/-45°	
Electrical downtilt range (see Ordering Information)	VR0: 0 to 12°, VR4: 4 to 16°	
VSWR / return loss, dB (maximum)	1.5:1/14.0	
Isolation between ports, dB (minimum)	-25	
Intermodulation (2 x 20 w), IM3, dBc	-150	
Impedance, ohms	50	
Maximum power per connector, CW (w)	500	

**MECHANICAL SPECIFICATIONS**

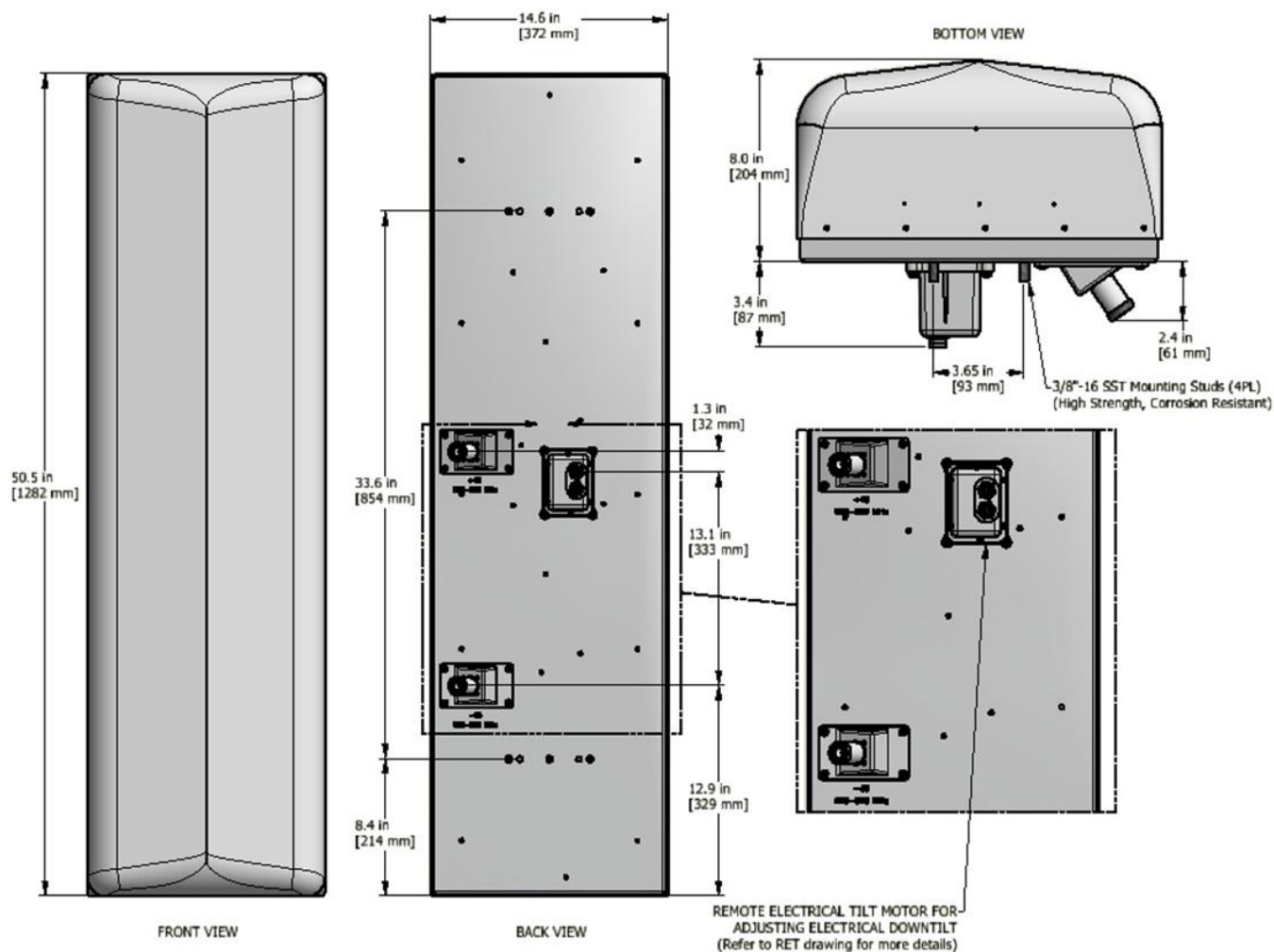
Dimensions, length/width/depth	50.5/14.6/8.0 in. (1282/372/204 mm)
Connector (quantity) type	(2) 7-16 DIN female
Connector torque	220-265 lbf·in (23-30 N·m)
Connector location	Back
Antenna weight	28.0 lb
Bracket weight (not included in antenna weight)	13.2 lb (6.0 kg)
Standard bracket kit	P/N 919011 (included)
Mechanical downtilt range	0-12°
Radome material	High strength Luran®, UV stabilized, ASTM D1925
Wind survival	150 mph (241 km/h)
Front wind load @ 100 mph	127.34 lbf (566.45 N)
Equivalent flat plate @ 100 mph	2.53 sq ft (c=2)

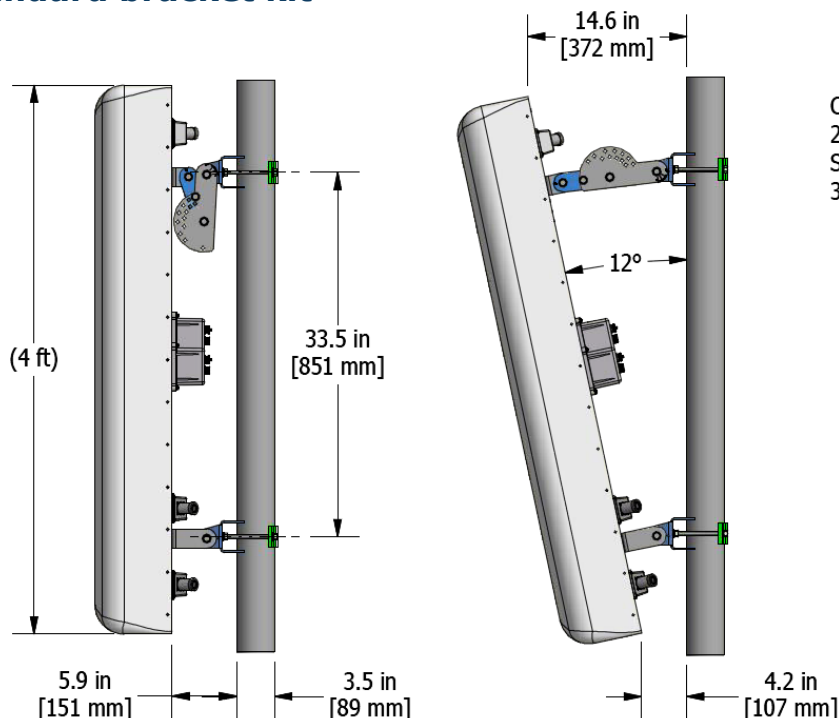
**RET INFORMATION (RET motors included with VR0 & VR4 models)**

Model	RET-200
Mounting location	Rear of antenna
Communication standard	AISG 2.0
Control system	PCU-1000

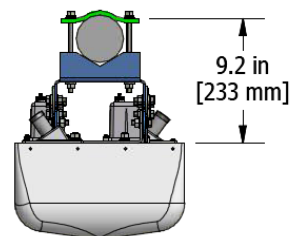
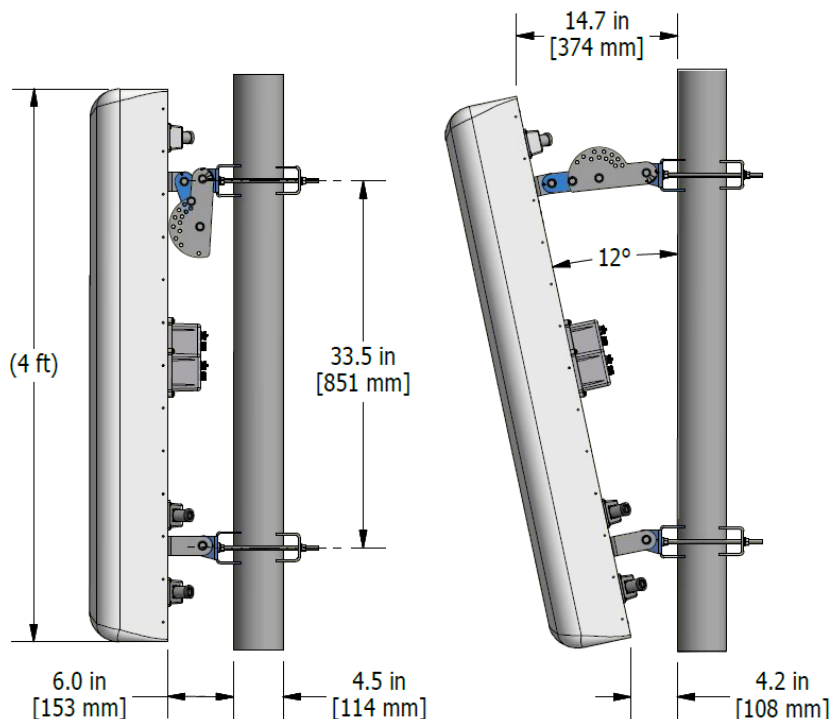
**ORDER INFORMATION**

MODEL	DESCRIPTION
X7C-FRO-460-VR0	Antenna with remote RET adjust electrical downtilt 0-12°
X7C-FRO-460-VR4	Antenna with remote RET adjust electrical downtilt 4-16°
919036	Optional bracket kit, 2-point, 12 deg D-tilt, for 4.5" OD pole

**Mechanical outline drawing: X7C-FRO-460-VR0, -VR4 models**

**Standard bracket kit**

CSS P/N: 919011 BRACKET KIT  
2 POINT, 12 DEGREE DOWN TILT  
SHOWN MOUNTED ON 3.5" O.D. POLE  
3.5" O.D. MAX POLE SIZE

**Optional bracket kit**

CSS P/N: 919036 BRACKET KIT  
2 POINT, 12 DEGREE DOWN TILT  
SHOWN MOUNTED ON 4.5" O.D. POLE  
4.5" O.D. MAX POLE SIZE

