

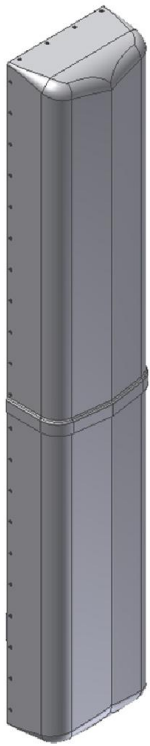


PRELIMINARY

X7CQAP-86-845-V

1 Xpol Low Band 2 Xpol in High Band, 698-896/1710-2170MHz, 96", 45° H-Beam

Variable E-Tilt, RET/MET



- 4 Branch Rx High Band antenna:
 - One 8' Low Band, Two 6' High Band Antennas in a Single Radome, each with Separate Tilts
- Quantity 3 RET or MET Setup
- Suitable for LTE/CDMA/UMTS/GSM
- AISG 2.0 RET or Manual MET Tilt Control

Electrical Specifications

Frequency Band, MHz	698-824	824-896	1710-1880	1850-1990	1920-2170
Horizontal Beamwidth, 3dB points	45°	45°	45°	45°	45°
Gain, dBi	16.1	16.4	17.8	17.9	17.7
Vertical Beamwidth, 3dB points	9.5°	8.3°	5.9°	5.7°	5.5°
Front-to-Back Ratio at 180°, dB	>28		>28		
Upper Sidelobe Suppression, Typical, dB	<-16	<-17	<-16		
Polarization	+/-45°		2x +/-45°		
Electrical Downtilt	0°-6° or 4°-10°		0°-6° or 4°-10°		
VSWR/Return Loss, dB, Maximum	1.5:1/14.0		1.5:1/14.0		
Isolation Between Ports, dB, Minimum	>28		>28		
Intermodulation (2x20w), IM3, dBc, Maximum	-150		-150		
Impedance, ohms	50		50		
Maximum Power Per Connector, CW	500		250		



PRELIMINARY

X7CQAP-86-845-V

1 Xpol Low Band 2 Xpol in High Band, 698-896/1710-2170MHz, 96", 45° H-Beam
Variable E-Tilt, RET/MET

Mechanical Specifications

Dimensions, Length/Width/Depth	96.0/14.6/8.9 in (1829/371/226mm)
Connector Quantity & Type	6 total: 2 low band, 4high Band , 7-16 DIN Female
Connector Torque	220-265 lbf-in (23-30 N-m)
Connector Location	Back
Antenna Weight	53.6 lbs (24.31 Kg) <i>Estimated</i>
Bracket Weight	18.2 lbs (8.25 Kg)
Standard Bracket Kit	CSS P/N 919032
Mechanical Downtilt Range	0°-6°
Radome Material	High Strength Luran, UV Stabilized, ASTM D1925
Wind Survival	150 mph (241 km/h)
Front Wind Load @100mph	276.0 lbf (1227.8 N)
Equivalent Flat Plate @ 100mph	5.62 sq-ft (c=2)

RET Information

Model	CSS-RET-200
Mounting Location	Back
Weight	1.2 lb (0.54 kg)
Communication Standard	AISG 2.0
Control System	CSS-PCU-220



Order Information

Model	Description
X7CQAP-86-845-VM0	Manual adjust variable e-tilt (MET), EDT 0-6° low band and 0-6° high band
X7CQAP-86-845-VM4	Manual adjust variable e-tilt (MET), EDT 4-10° low band and 4-10° high band
X7CQAP-86-845-VR0	Remote motor adjust variable e-tilt (RET), EDT 0-6° low band and 0-6° high band
X7CQAP-86-845-VR4	Remote motor adjust variable e-tilt (RET), EDT 4-10° low band and 4-10° high band

Optional Bracket Kit

919036 Bracket Kit, 2-Point, 12deg D-tilt, For 4.5" OD Pole

RET Ordering Information

AISG antenna only daisy chain cables

AISG Jumper Cable, M/F, 1.3 meters

CSS Part #

992100-CA013-SC

Qty.

2

[For additional AISG lengths please see fixed antenna matrix on www.jmawireless.com](http://www.jmawireless.com)

www.jmawireless.com

+1 (315) 431-7100