

Antenna model nomenclature

All NNAV™ antennas contain 13 characters:

MX08FRO660-02

(example model number)

- M** Product series
- X** Polarization
- 08** No. of antenna ports
- FRO** Product feature
- 6** Package
- 60** Horizontal beamwidth
- 02** Variant

NNAV antenna nomenclature: label categories

Product Series

M = macro

C = cylinder

S = stadium

D = DAS

Polarization

V = vertical

X = X-Pol

C = circular

No. of antenna ports

2, 4, 6, 8, 10, 12

Product feature

FRO = Fast Roll Off

FIT = Form In Tighter

OMI = Omni

TRI = Trisector

Length (ft)

8, 6, 4, 2, 1

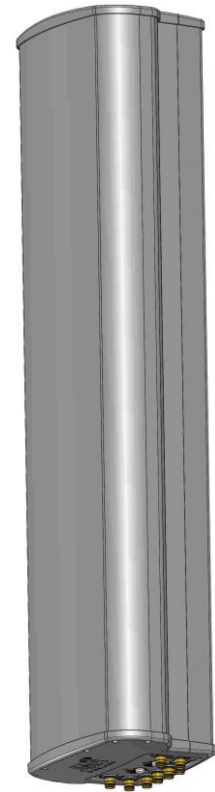
Horizontal beamwidth

xx – represents horizontal beamwidth in degrees

Variant

xx – specific variant details can be found in product datasheets

e.g., 02 = RET with Smart Bias Tee and external AISG ports



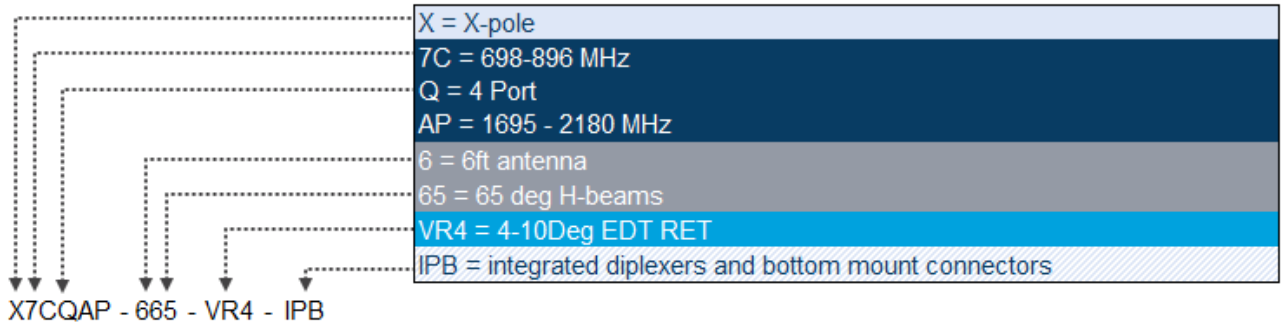
Antenna model nomenclature

All legacy antennas contain 15 characters:

X7CQAP-665-VR4-IPB

(actual model label)

X7C	Antenna type
7C	Band
Q	No. of antenna ports
AP	Band
6	Antenna length (ft.)
65	Horizontal beamwidth (°)
VR4	Electrical downtilt
IPB	Options



example:

X7CAP-665-VR4-IPB

Description: X-pol antenna, 698-896 & 1710 - 2170 MHz, 6ft, 65 deg. H-beam, with 2 degree EDT on low-band (698-896) and 4 degree EDT on high band (1710-2170) with integrated diplexer and bottom DIN connectors

Antenna Model Nomenclature

Reference Guide

Antenna nomenclature: label categories

Antenna type

X = cross X-Pol

C = circular pole

V = vertical pole

MB = Multi-Beam (X-Pol x 2)

TB = Tri-Beam (X-Pol x 3)

HB = Hex-Beam (X-Pol x 6)

FRO = Fast Roll Off antenna

CYL = cylinder antenna

FLG = flagpole antenna

No. of antenna ports

Q = four-port (MIMO)

Band

7 = antenna operates in 698 - 800 MHz (700)

E = antenna operates in 698 - 945 MHz

G = antenna operates in 698 - 960 MHz

C = antenna operates in 824 - 896 MHz (Cellular)

A = antenna operates in 1710 - 2170 MHz (AWS). Some models confirmed for AWS-3 (1695-2180 MHz)

P = antenna operates in 1850 - 1990 MHz (PCS)

W = antenna operates in 1710 - 2360 MHz

U = antenna operates in 1695 - 2700 MHz

Antenna length (ft.)

Horizontal beamwidth (degrees)

Electrical downtilt (in degrees, where "x" is low-band and "y" is high-band)

Options

IP = the antenna contains an integrated or pass-through diplexer

I = integrated diplexer, no pass through

N = N type connector(s) (NOTE: if no "N" 7/16 DIN connectors are standard)

M = Mini-DIN female connector(s) (currently for Tru-Omni & Omni-MIMO only. Without "M" = N connectors)

BOT = bottom mounted 7/16 DIN connector(s)

IPB = integrated diplexer and bottom mounted 7/16 DIN connector(s)

I7C = integrated diplexer for 698 - 800 // 824 - 896 (700MHz // cellular)

VRX = variable EDT with Remote Electrical Tilt (RET) motor

VF = variable EDT with flexible tilt range for low-band and high-band. Refer to model specification.

VM = variable EDT with manual adjust wheel