

## TBC-67-C-U-6SF

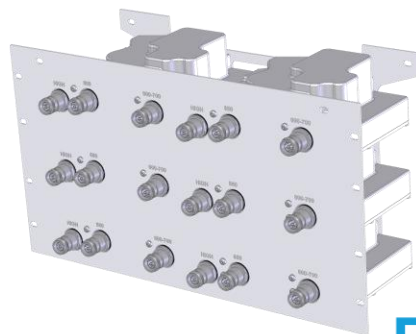
*Tri-Band Combiner*

*600–700/850/1695–2700*

*DC/AISG Sensing*

*6-unit rack assembly*

*4.3-10 Connectors*



**nwav**  
technology

- Combines 3 wireless bands: Cellular, 600–700MHz, and any high band wireless frequencies
- Very Low Insertion loss and High isolation for optimized system performance
- Automatic DC sense for easy installation and site evolution
- Industry leading connector technology for lasting performance. Compatible with JMA WPS weatherproofing solution

### Electrical specifications

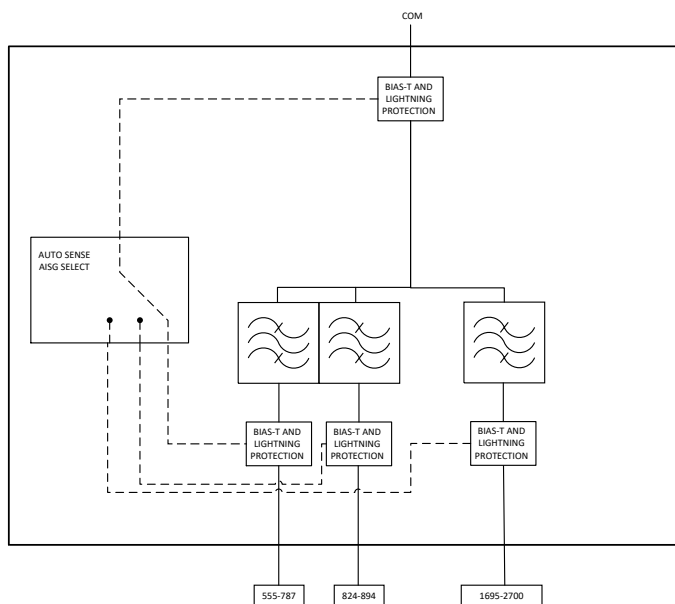
Passband	600–700	850	High Band	
Frequency, MHz	555–787	824–894	1695–2360	2360–2700
Insertion loss, dB max.	0.35	0.35	0.25	
Insertion loss, dB avg.	0.15	0.15	< 0.1	
Return loss, dB min.	22	22	22	
Isolation to other bands, dB min.	60	60	65	40
Average input power, W max.	200	200	200	
Input peak envelope power, W max.	3000	3000	3000	
PIM 2x +43 dBm, dBc min.	-156			

### Environmental specifications

Environmental rating	ETSI EN 300 019 class 4.1, RoHS
Ingress protection	IP67, unmated
Temperature range, °C	-40 to +65
Temperature range, °F	-40 to +149
Lightning protection all ports	RF port: ±10 kA max. (8/20 us), IEC 61000-4-5
Altitude	3,000 m max.   10,000 ft max.
Mean time between failures (MTBF)	>10 <sup>6</sup>

## DC sense and routing specifications

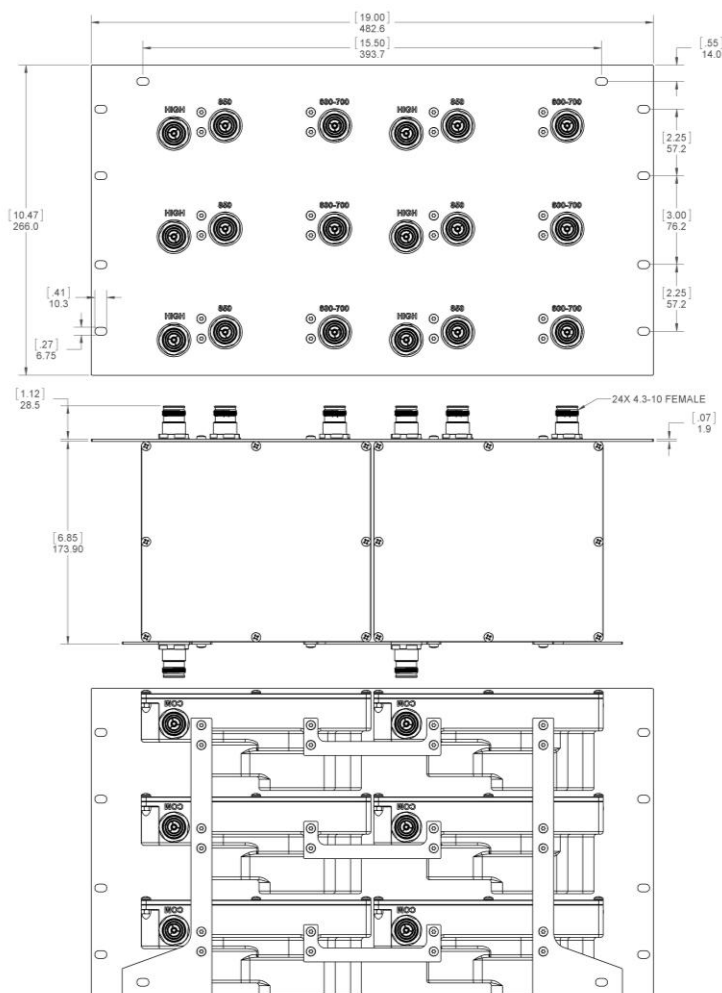
Input voltage, DCV max.	35
DC current rating amps	1.5, current limited
Compatibility AISG	1.1/2.0
<b>Triplexer on bottom (combiner)</b>	
DC on 600–700, 850, or high port	DC-AISG connected to COM
More than 1 port with DC detected	One port is selected. See <i>Port priority</i> below
Port priority (DC on multiple input ports)	P1 High, P2 600–700, P3 850
<b>Triplexer on top (splitter)</b>	
DC on COM detected	DC-AISG routed to port with an AISG Device
If more than one port has an AISG device	One port is selected. See <i>Port priority</i> below
Port priority (multiple AISG devices detected)	P1 High, P2 600–700, P3 850



Single block diagram (6x in -6SF)

**Mechanical specifications**

Connectors RF	4.3-10 (F)
Ground stud	M6 x 1 (hex nut included)
Connectors Quantity	24
Dimensions excluding brackets & connectors L x W x H mm (in.)	174 x 482.6 x 266 (6.85 x 19.0 x 10.47)
Weight, kg (lb)	18.1 (39.7)
Mounting	Pole/wall bracket supplied including two metal clamps for 45–178 mm diameter poles

**Ordering information**

TBC-67-C-U-6SF

3B Comb Rack (6) 600–700/850/High