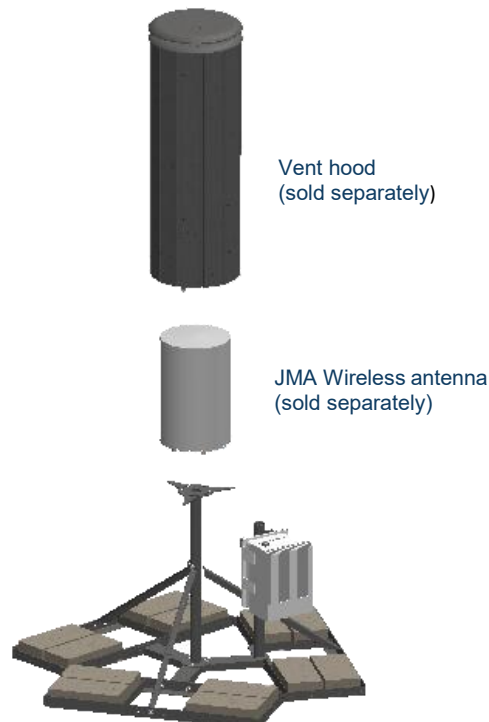


Rooftop Ballasted Mounting System

SC-BKT-RTB-XX

Small Cell solutions

JMA Wireless's proven mounting solutions are ideal complements to all infrastructure upgrades or retrofit projects. Our standard systems integrate with any antenna and radio configurations, effortlessly blend into urban/suburban environments, and withstand harsh weather conditions. This platform accommodates multiple shapes, sizes and weights, providing flexibility for future hardware needs. The product portfolio includes ultra-RF transparent, maintenance-free coverings, high-strength steel mounting brackets, and light-weight, durable carbon fiber poles.



General specifications

- Rated for extreme exposure zones
- Ultra-RF transparent sheathing
- One-piece construction
- No onsite welding required
- Universal platform for all hardware options
- Accommodates varied heights
- Optional RRU mounting post
- Two configuration options (shown on page 2)

Ordering information

Part number	Description
SC-BKT-RTB-SL	Roof Ballast w/10' pole & sleeve – silver
SC-BKT-RTB-BR	Roof Ballast w/10' pole & sleeve – brown
SC-BKT-RTB-GR	Roof Ballast w/10' pole & sleeve – gray
Additional components (included w/ SC-BKT-RTB-SL)	Description
SC-BKT-SLA	Universal Cantenna Mount Sleeve
SC-BKT-KPM	1 RRU King Post Mount

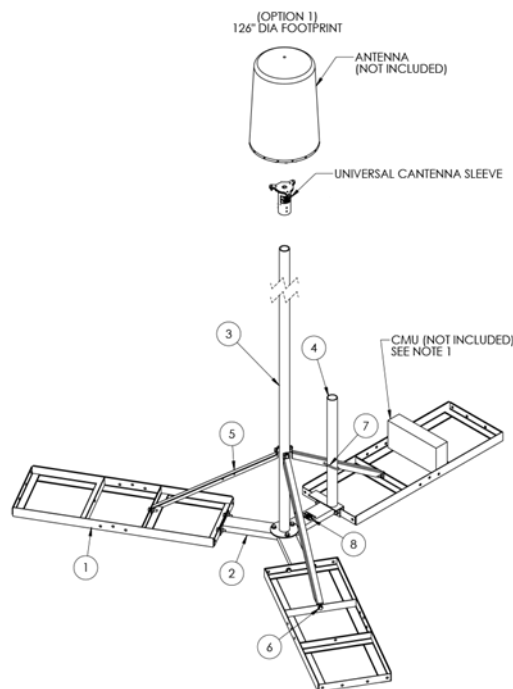
Rooftop Ballasted Mounting System

SC-BKT-RTB-XX

Mechanical drawings

Configuration option # 1

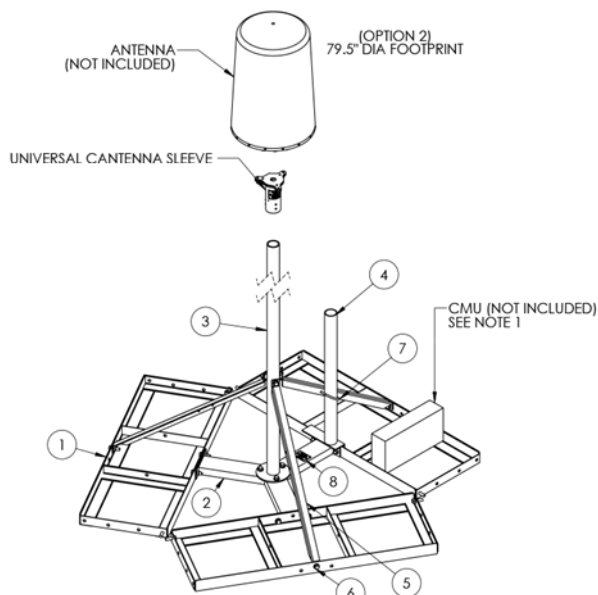
Item No.	Qty	Description
1	3	BALLAST TRAY WELDMENT
2	1	BASE WELDMENT
3	1	MAST WELDMENT, 10' X 2" NOM PIPE
4	1	RADIO MOUNT WELDMENT
5	3	MAST SUPPORT LEG WELDMENT
6	15	HFHCS, 1/2"-13UNC X 1.25 LG, GR5, VIB RES, ZINC
7	1	U-BOLT, 3" NOM PIPE
8	1	NAMEPLATE, LABEL, ADHESIVE BACKED



NOTES:
1. PLACE CONCRETE MASONRY UNITS (CMU'S) ON BALLAST TRAYS TO OFFSET WIND LOADING ON ANTENNA.

Configuration option # 2

Item No.	Qty	Description
1	3	BALLAST TRAY WELDMENT
2	1	BASE WELDMENT
3	1	MAST WELDMENT, 10' X 2" NOM PIPE
4	1	RADIO MOUNT WELDMENT
5	3	MAST SUPPORT LEG WELDMENT
6	21	HFHCS, 1/2"-13UNC X 1.25 LG, GR5, VIB RES, ZINC
7	1	U-BOLT, 3" NOM PIPE
8	1	NAMEPLATE, LABEL, ADHESIVE BACKED



NOTES:
1. PLACE CONCRETE MASONRY UNITS (CMU'S) ON BALLAST TRAYS TO OFFSET WIND LOADING ON ANTENNA.

Rooftop Ballasted Mounting System

SC-BKT-RTB-XX

Mechanical drawings: SC-BKT-SLA, Universal Cantenna Mount Sleeve (included)

Item No.	Qty	Description
1	1	UNIVERSAL CANTENNA MOUNT SLEEVE WELDMENT
2	1	SINGLE BOLT ADAPTER PLATE
3	6	SET SCREW, 5/16"-18UNC, CUP POINT, 5/16" LG, 18-8 SS
4	6	WASHER, FLAT, 5/16" 18-8 SS
5	6	NUT, NYLOCK, 5/16"-18UNC, 18-8 SS
6	1	NAMEPLATE, LABEL, ADHESIVE BACKED
7	1	CORROSION-RESISTANT ANTI-SEIZE LUBRICANT 0.14 oz

