

Macro Antennas

Macro Panel Fields

Example: MX06FIT865-02E

8' 65° 6 Port Enhanced Form-In-Tighter Cross-Pol Macro



Product Series

Cylinder = C
DAS = D
Indoor = I
Multi-Beam = L
Macro = M
Stadium = S

No. of antenna ports

2, 4, **6**, 8, 10, 12, 14, 16, 18, 24

Length (ft)

8, 6, 4, 3, 2, 1

Polarization

Circular = C
Vertical = V
X-Pol = X

Product Feature

FFP = Form Flush Pole
FHG = Form High Gain
FIT = Form In Tighter
FRO = Fast Roll Off
FSS = Form Split-Sector

Variant

Specific variant details found in product datasheets

e.g., 02E = RET with Smart Bias Tee and external AISG ports, E indicates new generation (enhanced)

Horizontal Beamwidth (°)

15 = 15°
33 = 33°
40 = 40°
45 = 45°
60 = 60°
65 = 65°

MX06FIT865-02E

Antenna Model Nomenclature

Reference Guide

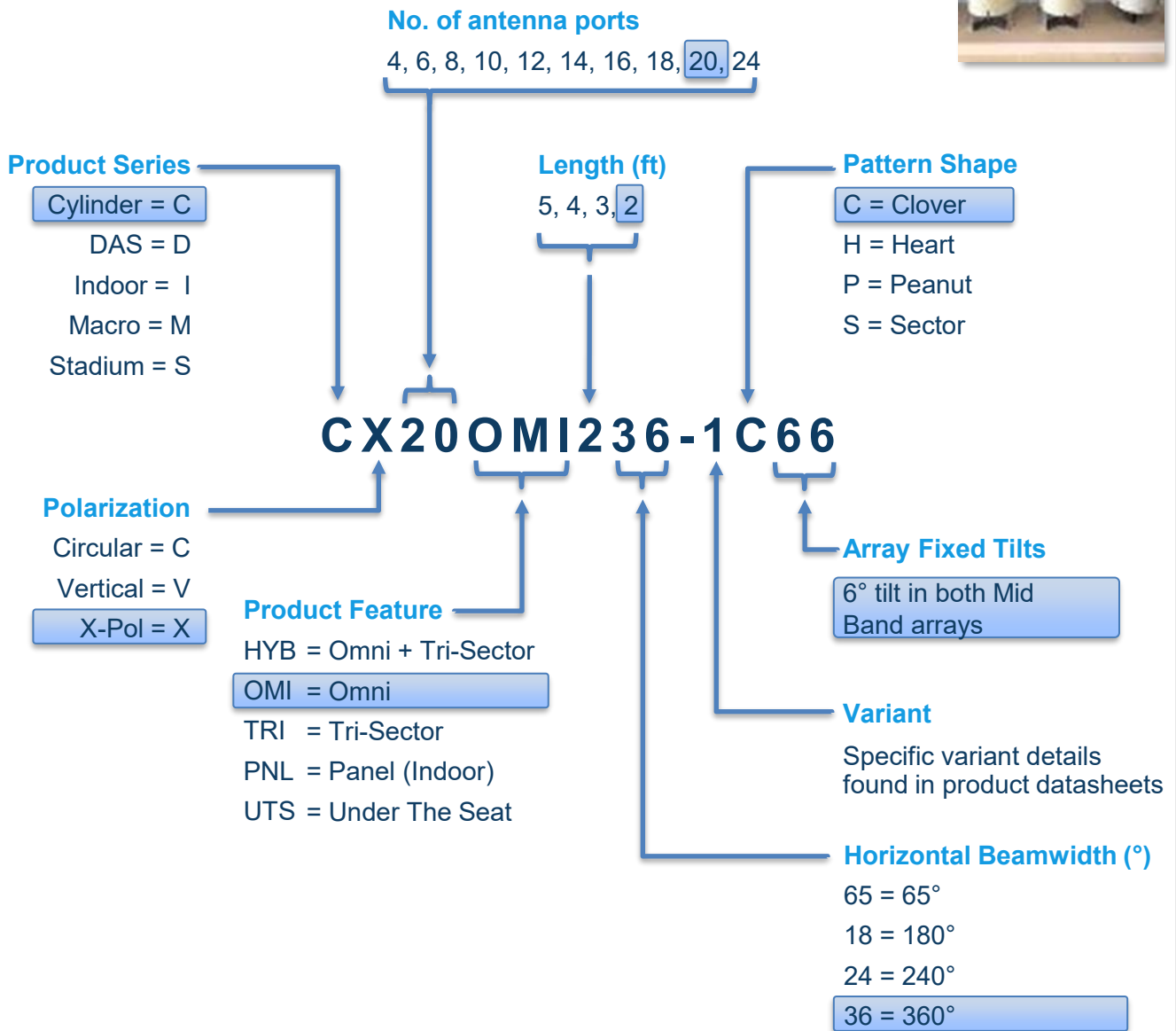


Canisters

Canister Antenna Fields

Example: CX20OMI236-1C66

2' Clover 20 Port with 6° Fixed Tilt in both Mid Band Arrays



Antenna Model Nomenclature

Reference Guide

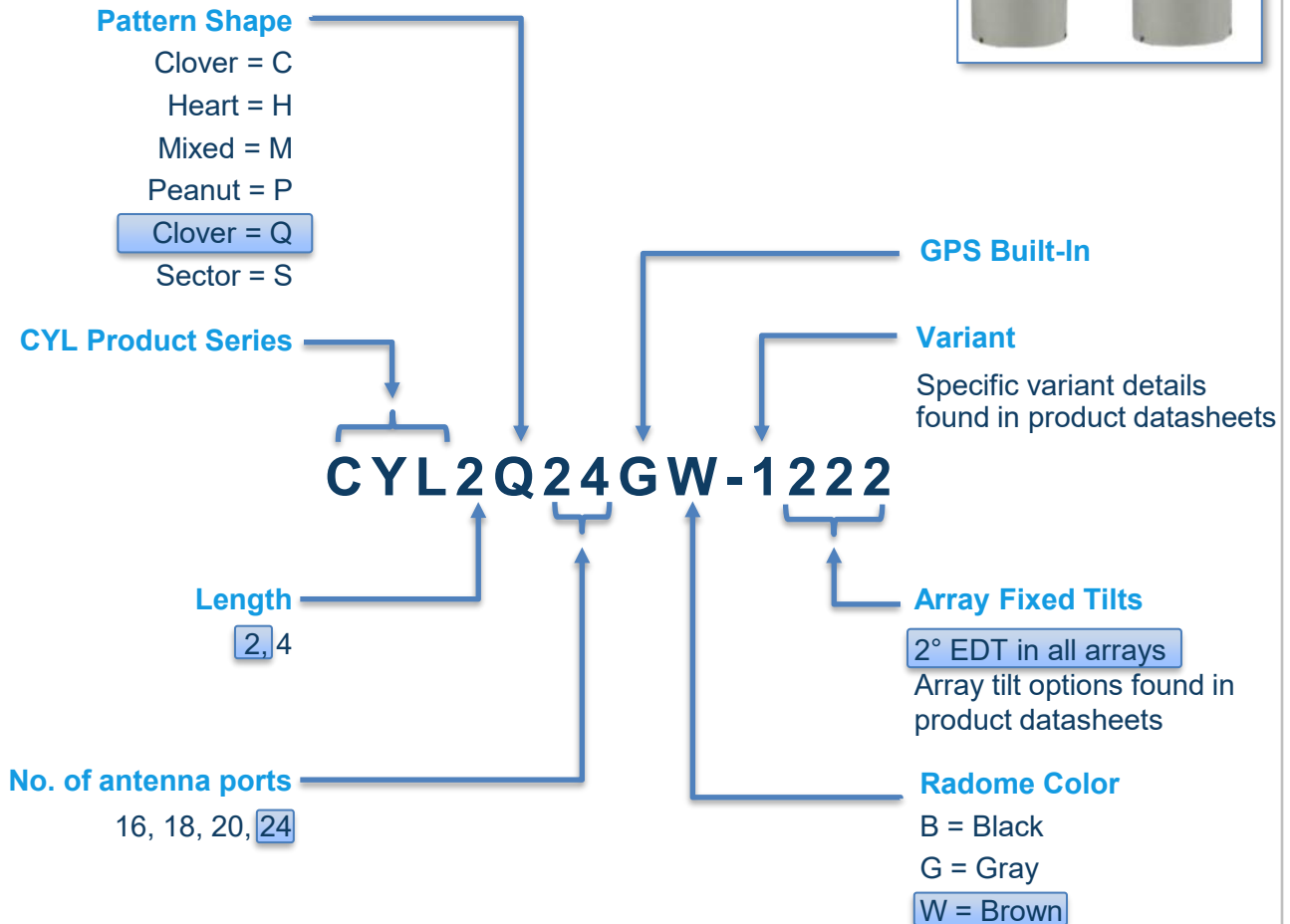


3PO Cylinders

3PO Cylinder Antenna Fields

Example: CYL2Q24GW-1222

2' Clover 24 Port GPS Gray with 2° Fixed Tilt
(both Mid Band Arrays)

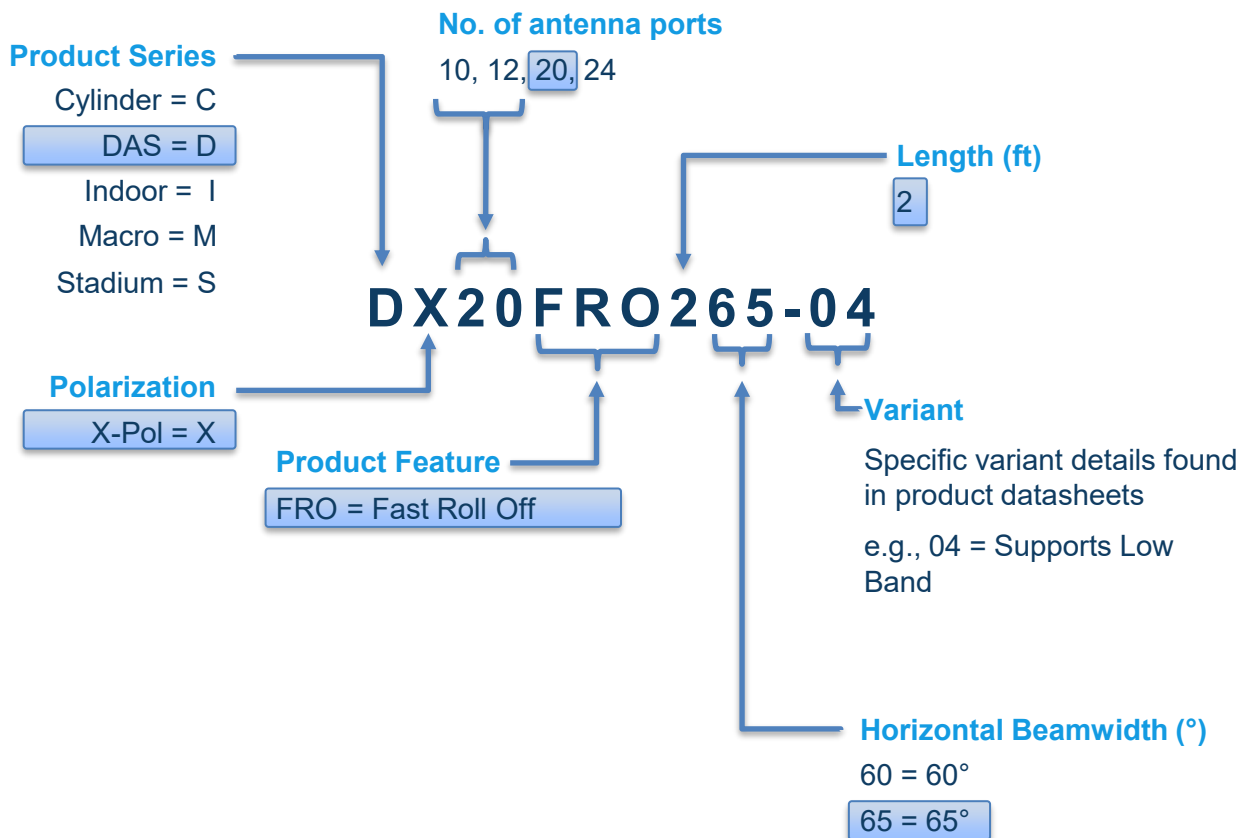


Outdoor DAS Antennas

Outdoor DAS Antenna Fields

Example: DX20FRO265-04

2' 65° 20 Port Fast-Roll-Off Cross-Pol Outdoor DAS Antenna



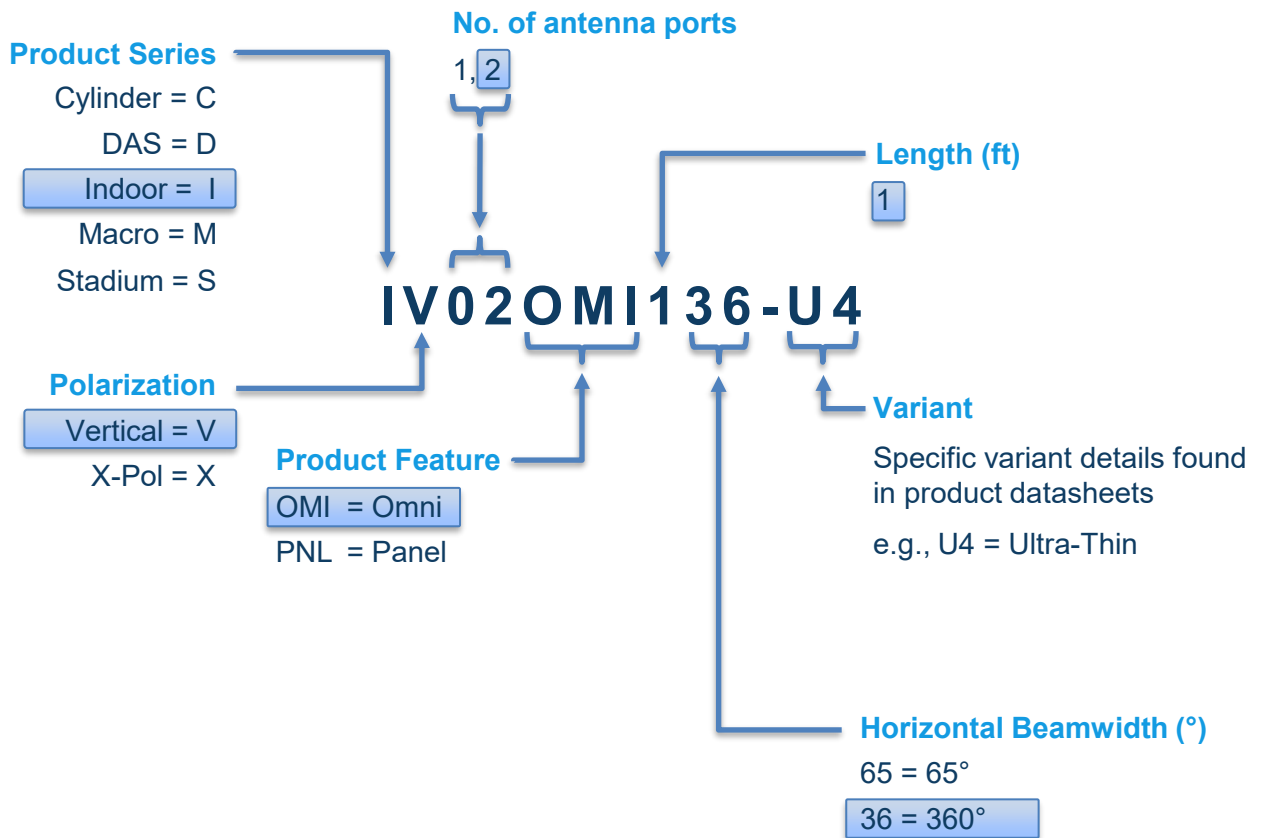
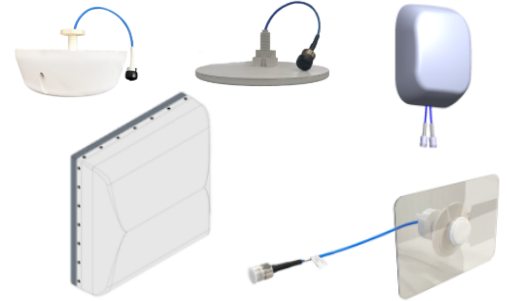
Indoor Antennas

Indoor Antenna Fields

Example: IV02OMI136-U4

1' 360° 2 Port Omni Vertically Polarized

Ultra Thin Indoor Antenna



Stadium Antennas

Stadium Antenna Fields

Example: *SX04FRO230-01*

2' 30° 4 Port Fast-Roll-Off Cross-Pol Stadium Panel

