

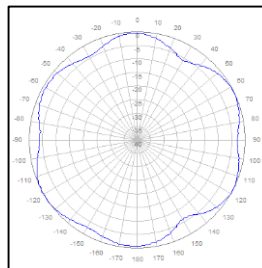
# CX14OMI236-1C

NWAV™ X-Pol OMNI Antenna | 14-Port | 2.98 cu. ft | 360°



**14-Port 2.98 cu. ft 360° Antenna with RET-controlled from 1695–2700 MHz  
(2) 698–960 MHz & (4) 1695–2700 MHz & (4) 3550–3700 MHz & (4) 5150–5925 MHz**

- X-Pol, small cell, Quasi OMNI antenna
- Suitable for pole or building mount
- 2x2 MIMO low-band, 4x4 MIMO for each of AWS/PCS/CBRS/LAA
- Internal beam combining
- Dependent RET control for 1695–2700 MHz frequencies
- Suitable for LTE/UMTS/CDMA/GSM technologies
- Cost-effective solution for neutral host locations



Omni Clover

Electrical specification (min./max.)	Ports 1, 2			Ports 3, 4, 5, 6				
Frequency bands, MHz	698–798	824–894	880–960	1695–1880	1850–1990	1920–2180	2300–2500	2500–2690
Polarization	± 45°			± 45°				
Average gain over all tilts, dBi	4.8	4.9	5.2	9.0	9.2	9.9	10.1	9.9
Horizontal beamwidth (HBW), degrees <sup>1</sup>	360°			360°				
Vertical beamwidth, (VBW), degrees <sup>1</sup>	37°	30°	26°	15.4°	14.4°	13.5°	12.0°	11.0°
Electrical downtilt (EDT) range, degrees	0° (FET)			2-8° (RET)				
X polar isolation, P2P, dB <sup>1</sup>	25	25	25	25	25	25	25	25
Max. VSWR/return loss, dB	1.5:1/ -14.0			1.5:1/ -14.0				
Max. PIM (3rd order 2x20 W carrier dBc)	-153			-153				
Maximum input power port, watts	250			150				
Total max. composite power, watts	900							

Electrical specification( Min/Max)	Ports 7,8,9,10			Ports 11,12, 13,14				
Frequency bands, MHz	3550–3700			5150–5250	5250–5350	5470–5725	5725–5850	5850–5925
Polarization	± 45°			± 45°				
Average gain over all tilts, dBi	5.0			5.5	5.7	5.5	5.5	5.6
Horizontal beamwidth (HBW), degrees <sup>1</sup>	360°							
Vertical beamwidth (VBW), degrees <sup>1</sup>	28°			24°	24°	20°	14°	18°
Electrical downtilt (EDT) range, degrees	0° (FET)							
X polar isolation, P2P, dB <sup>1</sup>	25			25				
Max. VSWR/return loss, dB	1.5:1/ -14.0			1.5:1/ -14.0				
Max. PIM (3rd Order 2x20W carrier dBc)	N/A							
Maximum input power port	10			.5	0.125	.125	0.5	0.5

<sup>1</sup> Typical value over frequency and tilt

\*USL at 5150-5925 MHz < -15dB at > 30° above horizon

# CX14OMI236-1C

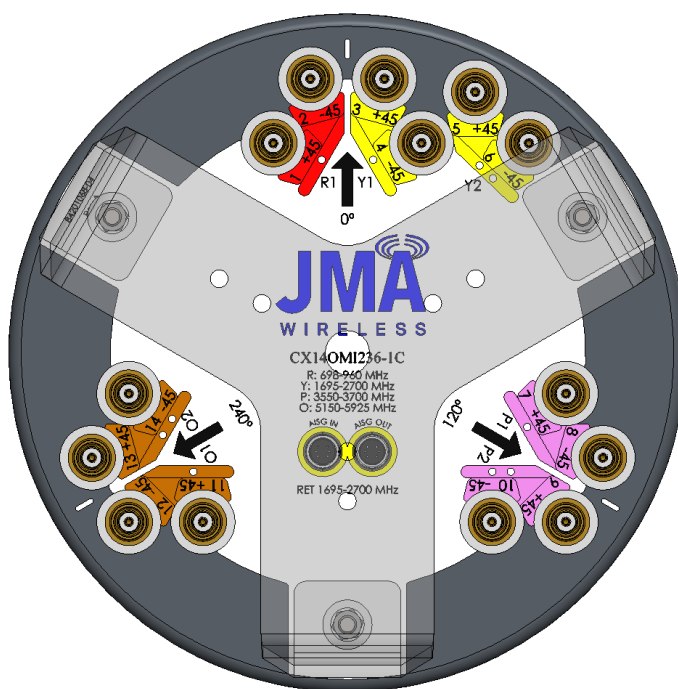
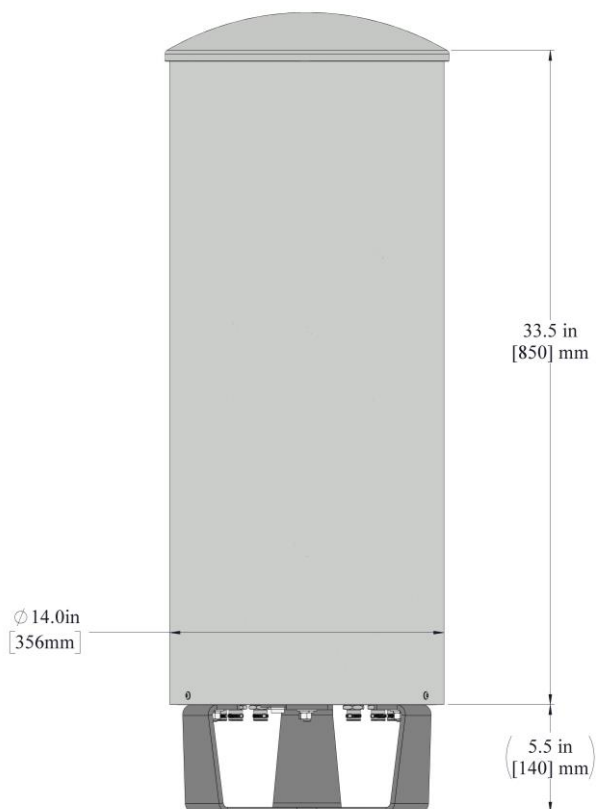
NWAV™ X-Pol OMNI Antenna | 14-Port | 2.98 cu. ft | 360°



Mechanical specifications	
Dimensions height/diameter, inches (mm)	33.5/14 (947/355)
Volume (cubic feet)	2.98
No. of RF input ports, connector type and location	14 x 4.3-10 female, bottom
RF connector torque	96 lbf-in (10.85 N m or 8 lbf-ft)
Net antenna weight, lb (kg)	35 (15.9)
Rated wind survival speed, mph (km/h)	150 (241)
Frontal wind loading @ 160 km/h, lbf (N)	58.7 (261.2)
Equivalent flat plate @ 100 mph and Cd=2, sq. ft	1.17

Front view

Bottom view



Ordering information	
<b>Antenna model</b>	<b>Description</b>
CX14OMI236-1C	2F X-Pol 14P OMNI 360°, HB 2-8° RET, 4.3-10
<b>Mounting bracket options</b>	See small cell mounting bracket options <a href="http://info.jmawireless.com/ret-antenna-matrix">http://info.jmawireless.com/ret-antenna-matrix</a>

# CX14OMI236-1C

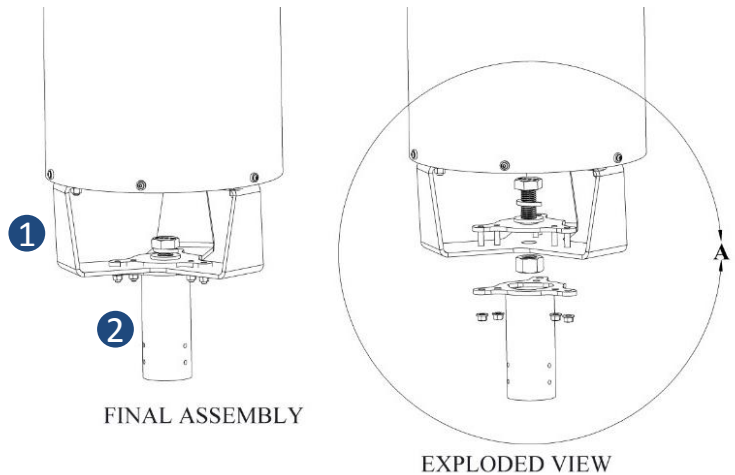
NWAV™ X-Pol OMNI Antenna | 14-Port | 2.98 cu. ft | 360°



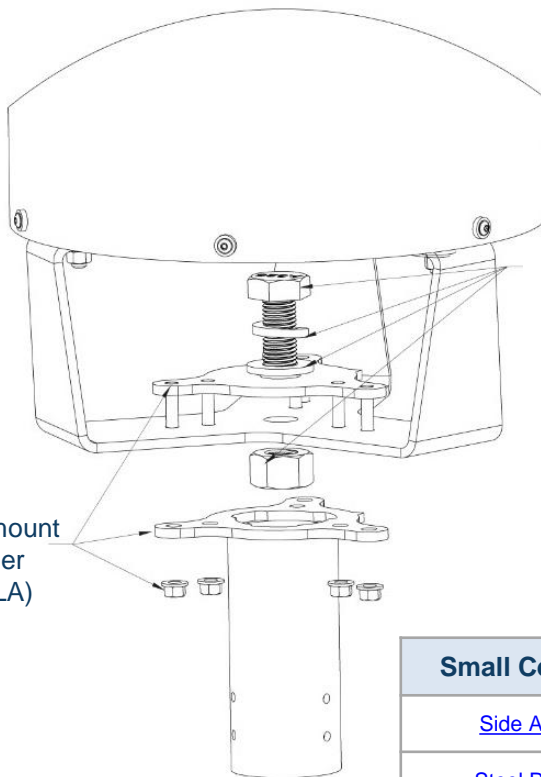
### Notes on cylinder brackets:

- All CX\* antennas come with the bottom mount bracket (marked as ①) factory installed (all factory testing is done with bracket attached)
- Hardware is included with each antenna to connect bottom bracket to different mounting systems
- JMA cylinder brackets are compatible with bottom mount via universal antenna mount sleeve (marked as ②) included with JMA cylinder mounting systems.

### Example bracket configuration



### Mounting details



**Included with antenna:**  
7/8" bolt, washer, nut  
(Torque to 202 lbf-ft)

**Sold separately:**  
Universal antenna mount sleeve for JMA cylinder brackets (SC-BKT-SLA)

### Small Cell solutions and mounting systems

<a href="#">Side Arm Mounting System</a>	SC-BKT-SA-(color)
<a href="#">Steel Pole Mounting System</a>	SC-BKT-SLA-(color)
<a href="#">Wide Diameter Pole</a>	SC-BKT-WTPE-(color)
<a href="#">Rooftop Ballasted Mounting System</a>	SC-BKT-RTB-(color)

# CX14OMI236-1C

NWAV™ X-Pol OMNI Antenna | 14-Port | 2.98 cu. ft | 360°



Remote electrical tilt (RET 1000) information	
RET location	Integrated into antenna
RET interface connector type	8-pin AISG connector per IEC 60130-9
RET Connector torque	Min. .5 Nm to max 1.0 Nm (hand pressure & finger tight connector)
RET interface connector quantity	2 pairs of AISG male/female connectors
RET interface connector location	Bottom of the antenna
Total No. of internal RETs high bands	1
RET input operating voltage, vdc	10–30
RET max power consumption, idle state, W	≤ 2.0
RET max power consumption, normal operating conditions, W	≤ 13.0
RET communication protocol	AISG 2.0/ 3GPP

**RET topology**

A single RET device controls all 3 sectors via the designated external AISG connector as shown below

RET device	Band	RF port
1	1695–2700	3–6

**Array topology**

Array ID	Band	RF Port
R1	698–960	1–2
Y1	1695–2700	3–4
Y2	1695–2700	5–6
V1	3550–3700	7–8
V2	3550–3700	9–10
V3	5150–5925	11–12
V4	5150–5925	13–14