

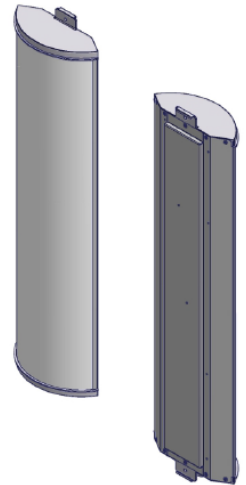
FLG-X7CAP-465

Dual Band Xpol, 4', 65° H-Beams

698-896 MHz

1710-2170 MHz

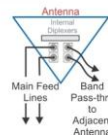
- Flag Antenna: Designed for Flag Pole Installations
- Suitable for LTE/CDMA/UMTS/GSM
- Optional Internal Diplexers



Available with Integrated Diplexers

Reduces mainline cables

Eliminates external tower devices



ELECTRICAL SPECIFICATIONS

Frequency Band, MHz	698-896	1710-2170
Horizontal Beam Width, 3dB points	65°	65°
Gain, dBi	14.4	17.9
Vertical Beam Width, 3dB points	14.5°	7.0°
Front-to-Back at 180°, dB	>27	>27
Upper Side Lobe Suppression, Typical, dB	<-18	<-18
Polarization	+/-45°	+/-45°
Electrical Down Tilt	2-10°	2-6°
VSWR/Return Loss, dB, Maximum	<1.50:1 / 14.0	<1.50:1 / 14.0
VSWR/Return Loss, dB, Max. "ip" Option	1.6:1/-12.7	1.6:1/-12.7
Isolation Between Ports, dB, Minimum	<-26	<-26
Intermodulation (2x20w), IM3, dBc	-150	-150
Impedance, ohms	50	50
Maximum Power Per Connector, CW (w)	500	250

MECHANICAL SPECIFICATIONS

Dimensions, Length/Width/Depth	50.6 x 13.9 x 6.2 in (1285x353x157mm)
Connector (Quantity) Location	(2) If Internally Diplexed or (4) if Non diplexed, 7/16 (F) DIN at the bottom
RF Distribution	Printed Microstrip Substrate
Antenna Weight	22.0 lbs
Bracket Weight	13.2 lbs (5.99 Kg)
Mounting Bracket (919038)	Stainless Steel Band Straps (Included)
Mechanical Down Tilt Range	Not applicable Fixed at 0°
Wind Survival	Must be mounted in an enclosed structure
Front Wind Load @100mph	Not specified
Equivalent Flat Plate@100mph	Not specified

ORDER INFORMATION

MODEL	DESCRIPTION
FLG-X7CAP-465-xyip	Includes two built-in diplexers to reduce input connector ports from 4 to 2 (see NOTE 1)
FLG-X7CAP-465-xy	Includes no built-in diplexers, four connector ports on bottom (see NOTE 1)
919040	Optional Extended bracket kit for 10-14" Diameter pole. Band Straps Supplied by the customer
909037	Optional Flag Pole Mounting Kit for 4' Flag pole antenna
NOTE 1	x = The required fixed, low-band tilt values, which are 2,4,6,8 or 10° y = The required fixed, high-band tilt values, which are 2,4 or 6°

Mechanical Outline Drawing

