

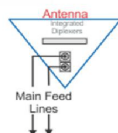
CYL-AXP18-60

CYLINDER– 60° H-Beams, 60" long x 16.3" diameter
1710-2170 MHz

Available with Integrated Diplexers

Reduces mainline cables

Eliminates external tower devices



ELECTRICAL SPECIFICATIONS

Frequency Band, MHz	1710	1920	2170
Horizontal Beamwidth, 3dB points	60°	60°	60°
Gain, dBi	17.1	17.4	17.8
Vertical Beamwidth, 3dB points	7°	7°	7°
Front-to-Back at Horizon	>30		
Upper Sidelobe Suppression, Typical, dB	< -18		
Polarization	+/-45°		
Elect. Downtilt Range, 2° Increments	0-6°		
VSWR/Return Loss, dB	<1.40:1 / 15.6		
VSWR / Return Loss w/ip	<1.50:1 / 14.0		
Intermodulation (2x20w), IM3, dBc	-150		
Impedance, ohms	50		
Maximum Power Per Connector, CW	250 CW at 1900 MHz		

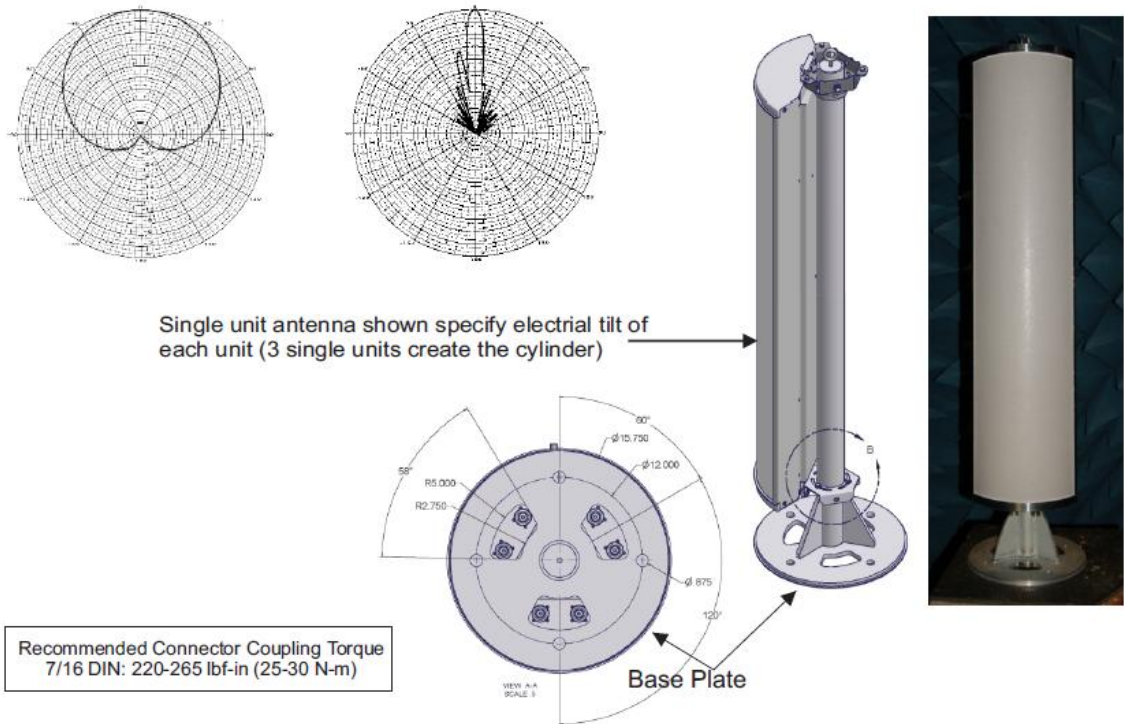
MECHANICAL SPECIFICATIONS

Antenna Dimensions	60" long x 16.3" dia. (1524 x 414mm)
Input Connector (female)	6 Bottom Mounted 7/16 DIN
Recommended Connector Coupling Torque	7/16 DIN: 220-265 lbf-in (25-30 N-m)
Total Weight	83.2 lbs
Antennas (3) Weight	55.2 lbs
Pole & Base Weight	28.0 lbs
Lightning Protection	Direct Ground
RF Distribution	Printed Microstrip Substrate
Radome	Ultra High-Strength Luran
Weatherability	UV Stabilized, ASTM D1925
Radome Water Absorption	ASTM D570, 0.45%
Environmental	MIL-STD-810E
Wind Survival	120 mph
Wind Load @100mph	162 lbf
Equivalent Flat Plate @100mph	3.3 sq-ft. (c=1.65)
Bottom Mount Flange	Aluminum / Stainless Steel

ORDER INFORMATION

MODEL	DESCRIPTION
CYL-AXP18-60-xyz	"x", "y" and "z" are order model placeholders for the built-in fixed electrical downtilt combinations in degrees. Set "x", "y" and "z" to either 0, 2, 4 or 6, for internal antennas 1, 2 and 3. Includes base plate, center pole & brackets.
FLG-4-3	Optional base mounting plate with 4ft center pole only, includes brackets, holds 3 FLG antennas.

Mechanical Outline Drawing



Standard Bracket Kit

Optional Bracket Kit