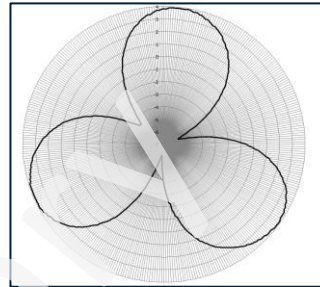


CX08OMI236-1C and -2C

NWAV™ X-Pol OMNI Antenna | Octo-Port | 2 ft | 360°

Octo-Port 2ft 360° Cantenna with MET/RET-controlled HB (2) 698-798 MHz, (2) 824-960 MHz & (4) 1695-2700 MHz

- X-pol, small cell, Octo-Port Port antenna
- Suitable for pole or building mount
- 2x2 MIMO low-band and 4x4 MIMO high-band
- Internal beam combining
- Dependent MET/RET control for HB Ports
- Independent ports for 700 & 850/900MHz
- Suitable for LTE/UMTS/CDMA/GSM technologies
- Cost-effective solution for neutral host locations



Omni Clover



nwav
technology

Electrical specification (minimum/maximum)	Ports 1,2	Ports 3,4	Ports 5,6,7,8				
Frequency bands, MHz	698-798	824-960	1695-1880	1850-1990	1920-2180	2300-2500	2500-2700
Polarization	± 45°	± 45°	± 45°				
Average gain over all tilts, dBi	5.7	6.4	9.4	9.7	9.9	10.1	10.2
Horizontal beamwidth (HBW), degrees	360°	360°	360°				
Vertical beamwidth, (VBW), degrees ¹	40°	35°	15.7°	14.6°	13.7°	12.6°	11.7°
Electrical downtilt (EDT) range, degrees	2° (FET)	2° (FET)	2-10° (MET/RET)				
Minimum cross polar isolation, port-to-port, dB	25	25	25	25	25	25	25
Maximum VSWR/return loss, dB	1.5:1/ -14.0	1.5:1/ -14.0	1.5:1/ -14.0				
Maximum passive Intermodulation (PIM), 2x 20W carrier, dBc	-153	-153	-153				
Maximum input power per any port, watts	250	250	125				

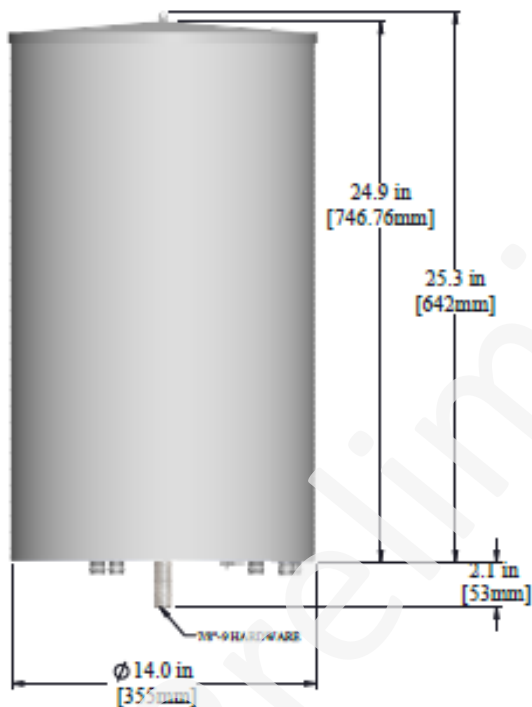
¹ Typical value over frequency and tilt

CX08OMI236-1C and -2C

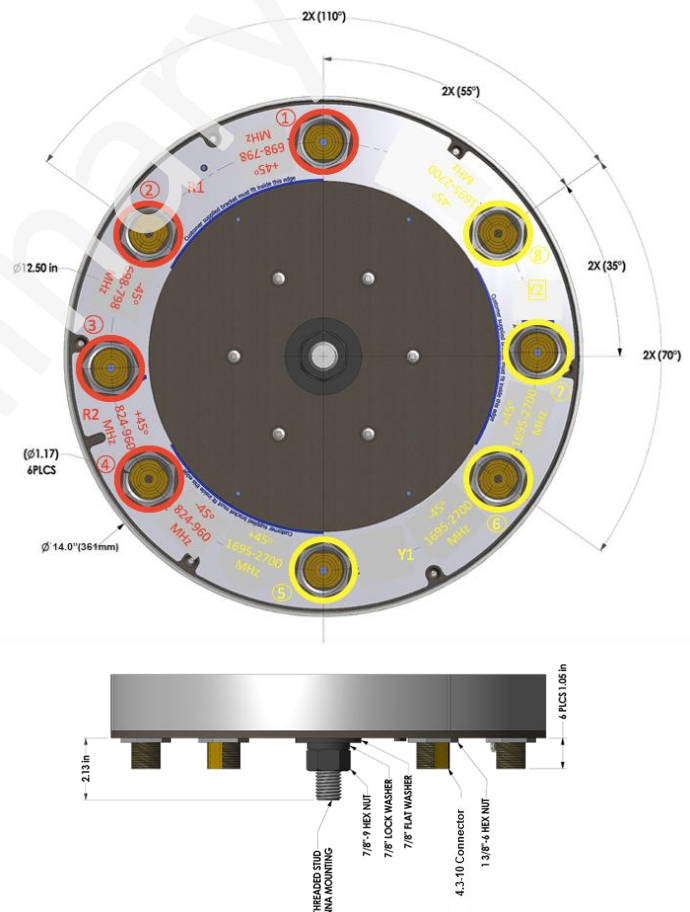
NWAV™ X-Pol OMNI Cantenna | Octo-Port | 2 ft | 360°

Mechanical specifications	
Dimensions height/diameter, inches (mm)	24.9/14 (747/355)
No. of RF input ports, connector type and location	8 x 4.3-10 female, bottom
RF connector torque	96 in- lb (10.85 N-M or 8 ft-lbs)
Net antenna weight, lbs. (kg)	45 (20.5)
Rated wind survival speed, mph (km/h)	150 (241)
Frontal wind loading @ 160 km/h, lbf (N)	45.9 (204.18)
Equivalent flat plate @100 mph and Cd=2, sq. ft	0.91

Front view



End view



Ordering information	
Antenna model	Description
CX08OMI236-1C	2F X-Pol OCTO OMNI 360° LB 2° FET, HB 2-10° RET, 4.3-10
CX08OMI236-2C	2F X-Pol OCTO OMNI 360° LB 2° FET, HB 2-10° MET, 4.3-10

CX08OMI236-1C and -2C

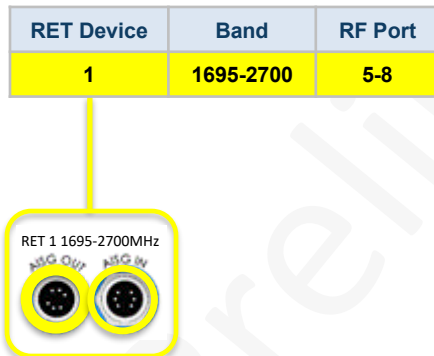
NWAV™ X-Pol OMNI Antenna | Octo-Port | 2 ft | 360°

Remote Electrical Tilt (RET 1000) information

RET location	Integrated into antenna
RET interface connector type	8-pin AISG connector per IEC 60130-9
RET interface connector quantity	2 pairs of AISG male/female connectors
RET interface connector location	Bottom of the antenna
Total No. of internal RETs high bands	1
RET input operating voltage, vdc	10-30
RET max power consumption, idle state, W	≤ 2.0
RET max power consumption, normal operating conditions, W	≤ 13.0
RET communication protocol	AISG 2.0/ 3GPP

RET topology

A single RET device controls all 3 sectors via the designated external AISG connector as shown below



Array topology

3 sets of radiating arrays

R1/R2 – 698-960MHz

Y1 – 1695-2180MHz

Y2 – 1695-2180MHz

Band	RF Port
1695-2700	5-6
698-798	1-2
824-960	3-4
1695-2700	7-8

