



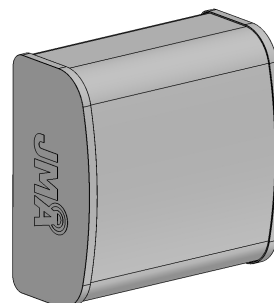
SX04FRO165-01E

NWAV™ X-Pol Antenna

4-port 1 ft 65° panel antenna 617-960, 1695-2690, 3400-4200 MHz:

2 ports 617-3980 MHz and 2 ports 3400-4200 MHz

- X-Pol, DAS, and Small Cell multi-port antenna
- Suitable for pole or building mount
- 4x4 MIMO for 3400-3980 MHz
- 2x2 MIMO for 617-3980 MHz
- Fast Roll Off pattern performance
- Cost-effective solution for neutral host locations



Electrical specification (min/max)	Ports 1, 2						
Frequency bands, MHz	617-798	824-960	1695-1880	1850-1990	1920-2180	2300-2400	2496-2690
Polarization	± 45°			± 45°			
Average gain, dBi	8.2	7.0	11.7	12.0	12.8	13.0	13.6
Horizontal beamwidth (HBW), degrees ¹	77.3°	80.0°	62.0°	65.0°	66.0°	68.0°	57.0°
Vertical beamwidth (VBW), degrees ¹	73.0°	82.5°	28.0°	26.2°	24.2°	22.0°	20.7°
Fixed electrical downtilt (EDT), degrees	0°						
Cross-polar isolation, port-to-port, dB ¹	25			25			
Max VSWR / return loss, dB	1.5:1 / -14.0			1.5:1 / -14.0			
Max PIM (3rd order, 2x20W) dBc	-153			-153			
Maximum input power port, watts	250			125			

Electrical specification (min/max)	Ports 1, 2			Ports 3, 4		
Frequency bands, MHz	3400-3550	3550-3700	3700-3980	3400 - 3550	3550-3700	3700-4200
Polarization	± 45°			± 45°		
Average gain, dBi	14.3	14.5	14.7	11	11.2	11.4
Horizontal beamwidth (HBW), degrees ¹	70	68	66	74	72	70
Vertical beamwidth (VBW), degrees ¹	18	16	15	52	50	48
Fixed electrical downtilt (EDT), degrees	0°			0°		
Cross-polar isolation, port-to-port, dB ¹	25			25		
Max VSWR / return loss, dB	1.5:1 / -14.0			1.5:1 / -14.0		
Max PIM (3rd order, 2x20W) dBc	-145			-145		
Maximum input power, watts	50			50		

¹ Typical value over frequency.



SX04FRO165-01E

NWAV™ X-Pol Antenna

Mechanical specifications	
Dimensions height/width/depth, inches (mm)	14.88/ 14.87/ 7.3 (378.0/ 377.7/ 185.7)
No. of RF input ports, connector type, and location	4 x 4.3-10 female, back
RF connector torque	96 lbf-in (10.85 N·m or 8 lbf-ft)
Net antenna weight, lb (kg)	9.5 (4.3)
Weight with supplied bracket, lb (kg)	14.7 (6.7)
Shipping weight, lbs. (kg)	21.6 (9.8)
Supplied bracket kit	91900324 (included)
Mechanical down-tilt range	+/- 25° lateral (azimuth adjustment) and +/- 50° vertical (up/down tilt)
Rated wind survival speed, mph (km/h)	120 (193) with 91900324 bracket kit
Frontal wind loading @ 150 km/h, lbf (N)	20.1 (89.5)
Equivalent flat plate @ 100 mph and Cd=2, sq ft	0.45
Installation instructions	DX-*/SX-*/IX-* Antenna Mounting Instructions and Kits 81900511
Weep hole drilling instructions	DX-*/SX-*/IX-* Antenna Weep Hole Modification Guide

Front view	Back view	Side view
Connector View		

Array topology			Notes
			Refer to JMA weep hole modification guide at jmwireless.com for mandatory drilling instructions. The SX antennas can be painted in accordance with the JMA painting guidelines at jmwireless.com
Array ID	Band	RF port	
R1/Y1/P1	617-960/1695-2690/3400-3980	1-2 1-2 1-2	
P2	3400-4200	3-4	

Ordering information	
Antenna model	Description
SX04FRO165-01E	1F X-Pol 4-port panel 65°, 4.3-10
919055	Optional inverted mounting kit for 4.0-10.0 in. OD pole
91900313	Optional bracket kit for extended horizontal and vertical tilt ranges