



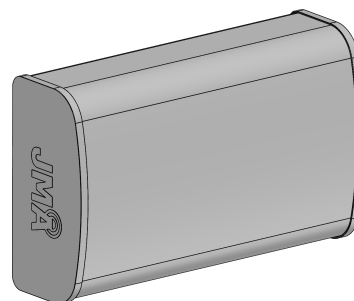
SX04FRO128-01E

NWAV™ X-Pol Antenna

4-port 1 ft 28° panel antenna 617-960, 1695-2690, 3400-4200 MHz:

2 ports 617-3980 MHz and 2 ports 3400-4200 MHz

- X-Pol, DAS, and Small Cell multi-port antenna
- Suitable for pole or building mount
- 4x4 MIMO for 3400-3980 MHz
- 2x2 MIMO for 617-3980 MHz
- Fast Roll Off pattern performance
- Enhanced pattern characteristics for Band 41 and 77
- Cost-effective solution for neutral host locations



Electrical specification (min/max)	Ports 1, 2						
Frequency bands, MHz	617-798	824-960	1695-1880	1850-1990	1920-2180	2300-2400	2496-2690
Polarization	± 45°			± 45°			
Average gain, dBi	11.1	10.7	11.0	11.4	12.0	12.5	12.8
Horizontal beamwidth (HBW), degrees ¹	36.0°	28.7°	35.0°	32.0°	28.0°	25.0°	24.0°
Vertical beamwidth (VBW), degrees ¹	62.1°	60.0°	58.0°	60.0°	53.0°	47.0°	46.0°
Fixed electrical downtilt (EDT), degrees	0°						
Cross-polar isolation, port-to-port, dB ¹	25			25			
Max VSWR / return loss, dB	1.5:1 / -14.0			1.5:1 / -14.0			
Max PIM (3rd order, 2x20W) dBc	-153			-153			
Maximum input power port, watts	250			150			

Electrical specification (min/max)	Ports 1, 2			Ports 3, 4		
Frequency bands, MHz	3400-3550	3550-3700	3700-3980	3400-3550	3550-3700	3700-4200
Polarization	± 45°			± 45°		
Average gain, dBi	13.2	13.0	13.2	13.2	13	13.2
Horizontal beamwidth (HBW), degrees ¹	31.5	32.8	32	31.5	32.8	32
Vertical beamwidth (VBW), degrees ¹	41	46	50	41	46	50
Fixed electrical downtilt (EDT), degrees	0°			0°		
Cross-polar isolation, port-to-port, dB ¹	25			25		
Max VSWR / return loss, dB	1.5:1 / -14.0			1.5:1 / -14.0		
Max PIM (3rd order, 2x20W) dBc	-145			-145		
Maximum input power, watts	50			50		

¹ Typical value over frequency.

Mechanical specifications	
Dimensions height/width/depth, inches (mm)	14.88/ 24.17/ 7.3 (378.0/ 613.9/ 185.7)
No. of RF input ports, connector type, and location	4 x 4.3-10 female, back
RF connector torque	96 lbf-in (10.85 N·m or 8 lbf-ft)
Net antenna weight, lb (kg)	13.65 (6.2)
Weight with supplied bracket, lb (kg)	18.7 (8.5)
Shipping weight, lbs. (kg)	28.0 (12.7)
Supplied bracket kit	91900324 (included)
Mechanical down-tilt range	+/- 25° lateral (azimuth adjustment) and +/- 50° vertical (up/down tilt)
Rated wind survival speed, mph (km/h)	120 (193) with 91900324 bracket kit
Frontal wind loading @ 150 km/h, lbf (N)	32.7 (145.5)
Equivalent flat plate @ 100 mph and Cd=2, sq ft	0.74
Installation instructions	DX-*/SX-*/IX-* Antenna Mounting Instructions and Kits 81900511
Weep hole drilling instructions	DX-*/SX-*/IX-* Antenna Weep Hole Modification Guide

Front view	Back view	Side view
	<p>Refer to JMA weep hole modification guide at jmawireless.com for mandatory drilling instructions.</p> <p>The SX antennas can be painted in accordance with the JMA painting guidelines at jmawireless.com</p>	

Array topology			Connector view								
<table border="1"> <thead> <tr> <th>Array ID</th> <th>Band</th> <th>RF port</th> </tr> </thead> <tbody> <tr> <td>R1/Y1/P1</td> <td>617-960/1695-2690/3400-3980</td> <td>1-2 1-2 1-2</td> </tr> <tr> <td>P2</td> <td>3400-4200</td> <td>3-4</td> </tr> </tbody> </table>	Array ID	Band	RF port	R1/Y1/P1	617-960/1695-2690/3400-3980	1-2 1-2 1-2	P2	3400-4200	3-4		
Array ID	Band	RF port									
R1/Y1/P1	617-960/1695-2690/3400-3980	1-2 1-2 1-2									
P2	3400-4200	3-4									

Ordering information	
Antenna model	Description
SX04FRO128-01E	1F X-Pol 4-port panel 28°, 4.3-10
919055	Optional inverted mounting kit for 4.0-10.0 in. OD pole
91900313	Optional bracket kit for extended horizontal and vertical tilt ranges