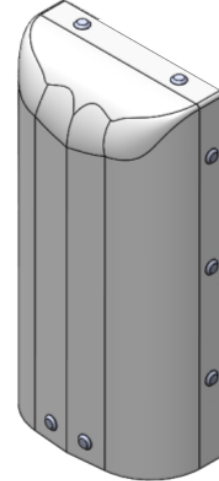


SX02FIT165-20

NWAV™ X-Pol Antenna

2-port 13 in. 65° CBRS panel antenna 3400-3700 MHz

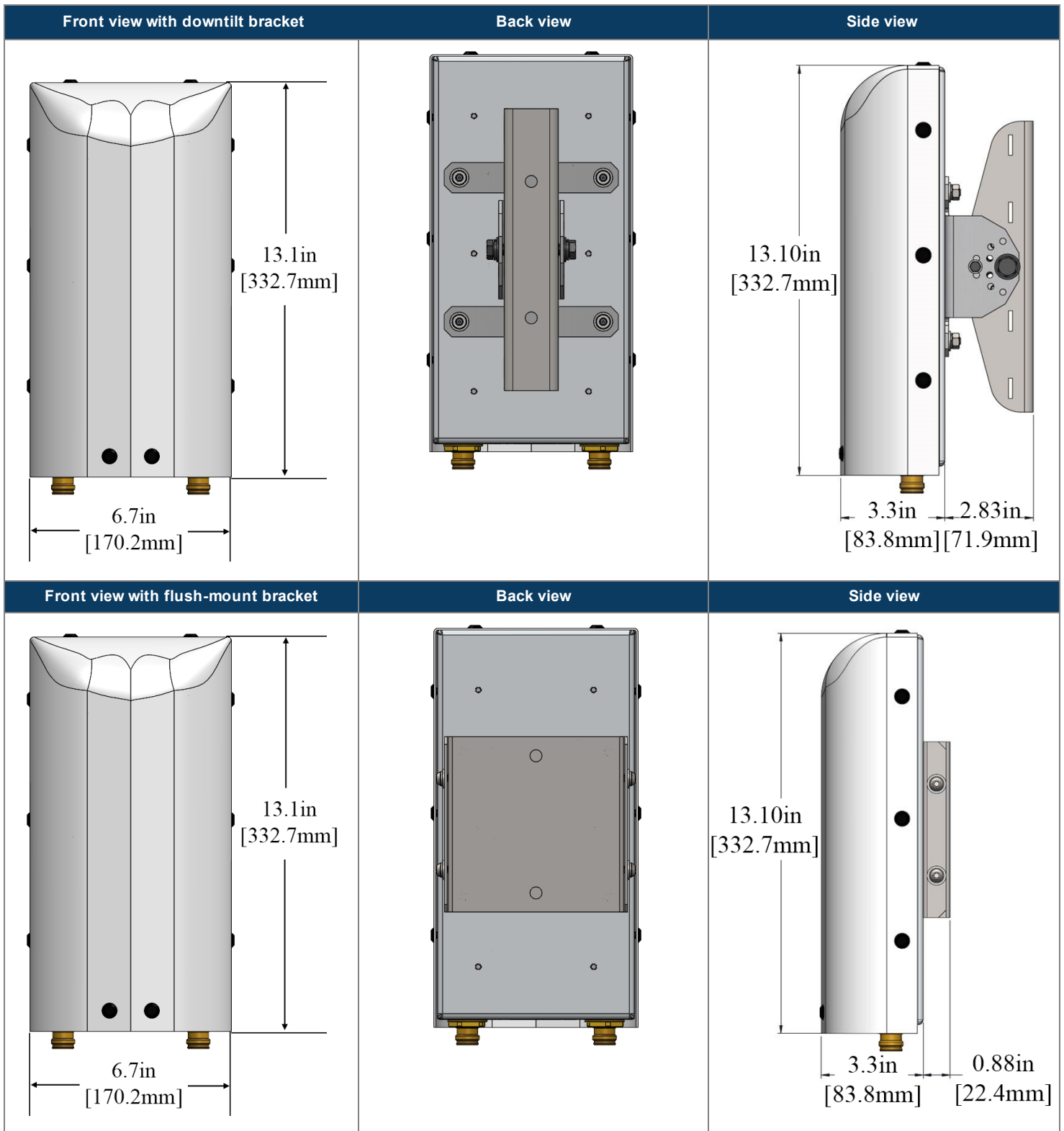
- 4G and 5G 3.5 GHz 2T2R antenna
- Ideal for urban and venue coverage
- Bottom-mounted connectors for ease of installation
- Low profile for enhanced aesthetics
- Flush-mount and downtilt bracket options



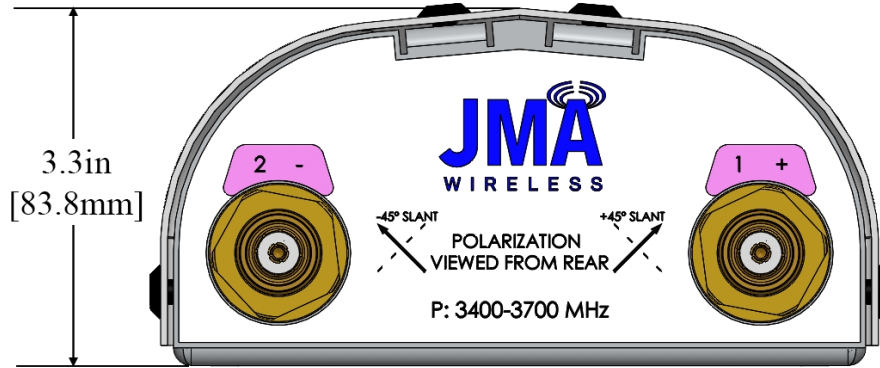
Electrical specification	Ports 1, 2
Frequency bands, MHz	3400-3700
Gain, dBi	13.5
Horizontal beamwidth (HBW), degrees ¹	68
Vertical beamwidth (VBW), degrees ¹	19.7
Beam tilt, degrees	0
First Upper Side lobe, dB	17
Front-to-Back Ratio at 180° ±30°, dB	34
Cross-polar isolation, port-to-port, dB ¹	22
VSWR / return loss, dB	1.5:1 / -14.0
PIM (3rd order, 2x20W) dBc	-145
Maximum input power per port at 50 °C, watts	75

¹ Typical value over frequency.

Mechanical specifications	
Dimensions height/width/depth, inches (mm)	13.1/6.7/3.3 (332.7/ 170.2/ 83.8)
No. of RF input ports, connector type, and location	2 x 4.3-10 female, bottom
RF connector torque	96 lbf-in (10.85 N·m or 8 lbf-ft)
Net antenna weight, lb (kg)	4.05 (1.84)
Weight with supplied mount bracket, lb (kg)	5.50 (2.49)
Shipping weight, lbs. (kg)	6 (2.72)
Rated wind survival speed, mph (km/h)	150 (241)
Frontal wind loading @ 150 km/h, lbf (N)	13.8 (61.3)



Bottom view



Ordering information

Antenna model	Description
SX02FIT165-20	13 inch, 65 deg, 2 port, CBRS panel antenna incl mount bracket