



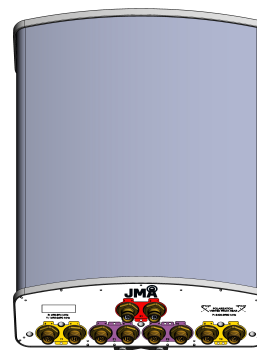
DX10FRO260-20/26

NWAV™ 2F Panel Antenna

10-port panel antenna from 698-3980 MHz

2F panel antenna, 10 ports: 2 ports 698-960, 4 ports 1695-2690 MHz, and 4 ports 3400-3980 MHz

- X-Pol, Small Cell, panel antenna
- Suitable for pole or building mount
- 4x4 MIMO for 1695-3980 MHz
- 2x2 MIMO for Low-Band
- Suitable for 5G/LTE technologies



Electrical specification (min/max)	Ports 1, 2			Ports 3, 4, 5, 6				
Frequency bands, MHz	698-798	824-894	880-960	1695-1880	1850-1990	1920-2180	2300-2400	2496-2690
Polarization	$\pm 45^\circ$			$\pm 45^\circ$				
Average gain, dBi	10.0	10.1	10.5	13.5	13.8	14.4	14.6	15.3
Horizontal beamwidth (HBW), degrees ¹	69°	69°	69°	68°	65°	64°	62°	59°
Vertical beamwidth (VBW), degrees ¹	41°	39°	37°	16.8°	16.7°	15.8°	13.5°	11.7°
Fixed electrical downtilt (EDT), degrees	2°			0 or 6°				
Cross-polar isolation, port-to-port, dB ¹	25			25				
Max VSWR / return loss, dB	1.5:1 / -14.0			1.5:1 / -14.0				
Max PIM (3rd order, 2x20W) dBc	-153			-153				
Maximum input power port, watts	100			150				

Electrical specification (min/max)	Ports 7, 8, 9, 10
Frequency bands, MHz	3400-3980
Polarization	$\pm 45^\circ$
Average gain, dBi	16.4
Horizontal beamwidth (HBW), degrees ¹	62°
Vertical beamwidth (VBW), degrees ¹	9°
Fixed electrical downtilt (EDT), degrees	0°
Cross-polar isolation, port-to-port, dB ¹	22
Max VSWR / return loss, dB	1.5:1 / -14.0
Max PIM (3rd order, 2x20W) dBc	N/A
Maximum input power, watts	50

¹ Typical value over frequency.



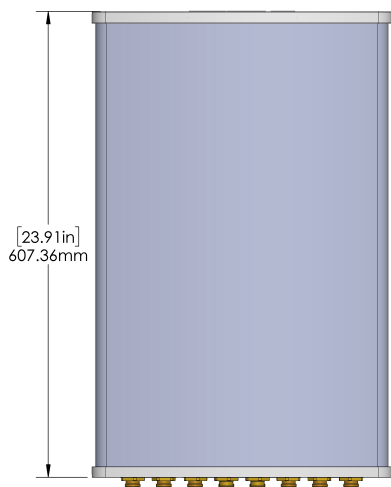
DX10FRO260-20/26

NWAV™ 2F Panel Antenna

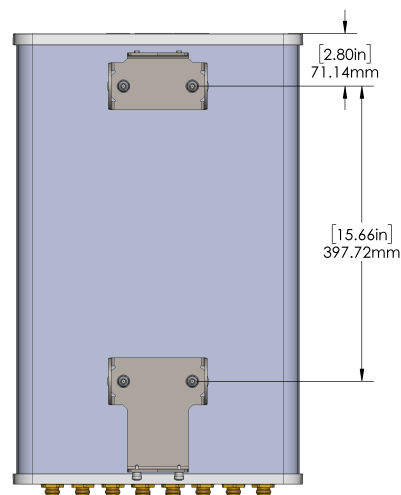
Mechanical specifications

Dimensions height/width/depth, inches (mm)	24/ 15/ 5.25 (610/ 381/ 134)
No. of RF input ports, connector type, and location	12 x 4.3-10 female, back
RF connector torque	96 lbf·in (10.85 N·m or 8 lbf·ft)
Net antenna weight, lb (kg)	12.3 (5.6)
Weight with supplied pipe mount bracket, lb (kg)	17.4 (7.9)
Shipping weight, lb (kg)	23.3 (10.6)
Rated wind survival speed, mph (km/h)	150 (241)
Frontal wind loading @ 150 km/h, lbf (N)	30 (133)
Equivalent flat plate @ 100 mph and Cd=2, sq ft	0.34
Mounting kit	Includes 91900318 downtilt bracket and wall-mount bracket (excludes pole-mount kit 91900339-01 which is sold separately)
Installation instructions	See instructions for 91900318 and 91900339 .
Weep hole drilling instructions	DX-*/SX-*/IX-* Antenna Weep Hole Modification Guide

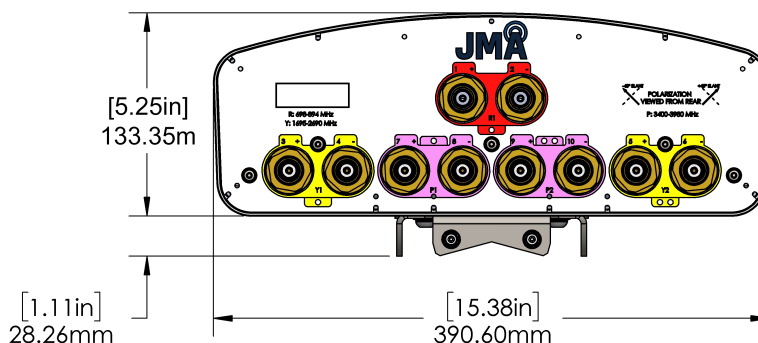
Front view



Back view



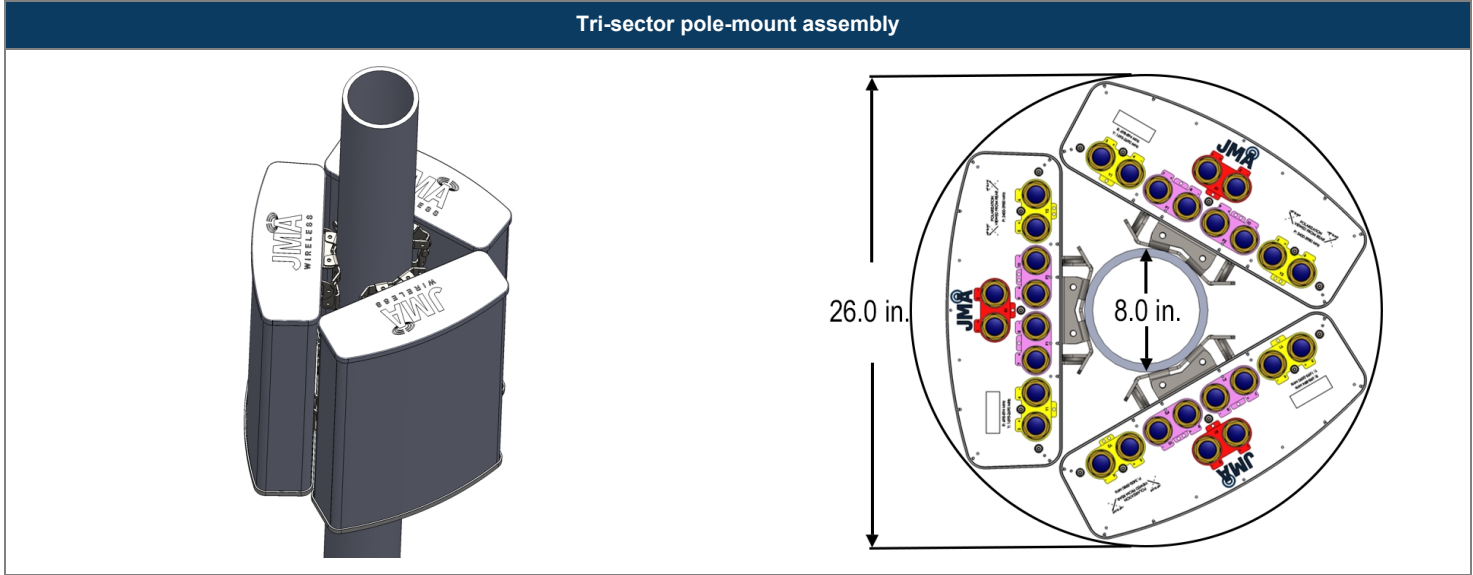
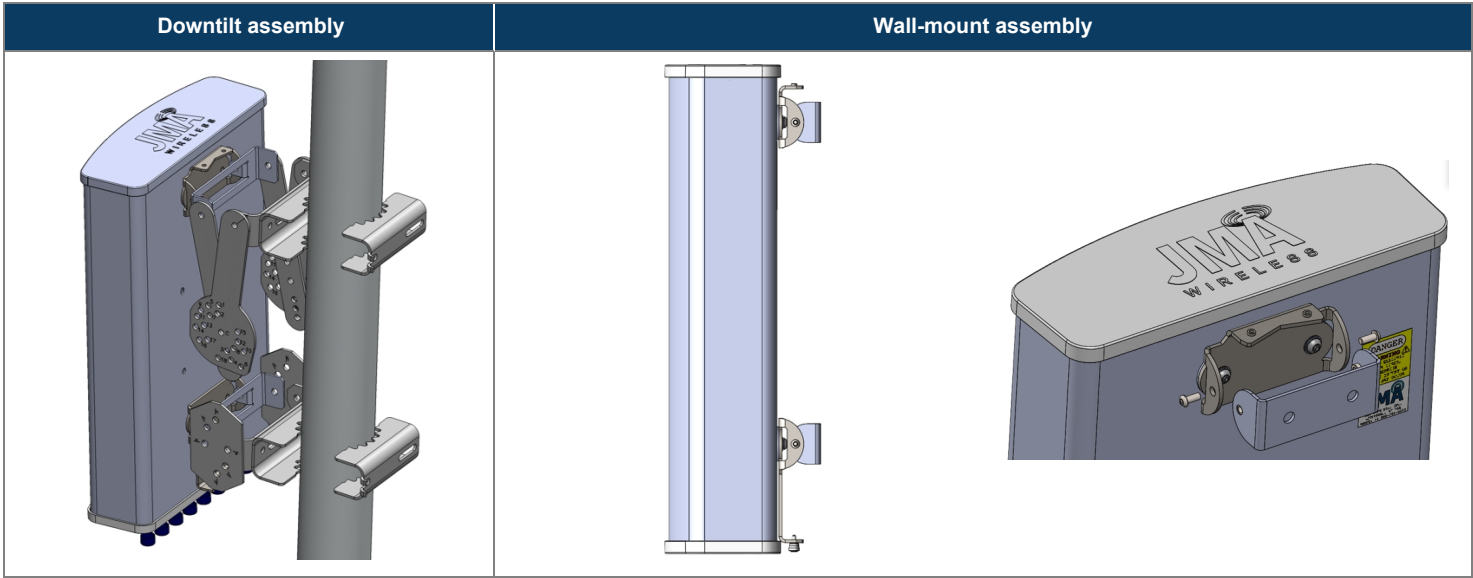
Bottom view





DX10FRO260-20/26

NWAV™ 2F Panel Antenna



Ordering information	
Antenna model	Description
DX10FRO260-20	2F panel antenna, 10 ports, (2) 698–960 two degrees EDT, (4) 1695-2690 zero degrees EDT, (4) 3400-3980 zero degrees EDT
DX10FRO260-26	2F panel antenna, 10 ports, (2) 698–960 two degrees EDT, (4) 1695-2700 six degrees EDT, (4) 3400-398 zero degrees EDT
Mounting kit (included)	91900318 downtilt bracket
Tri-sector pole-mount bracket (sold separately)	91900339 tri-sector pole-mount bracket