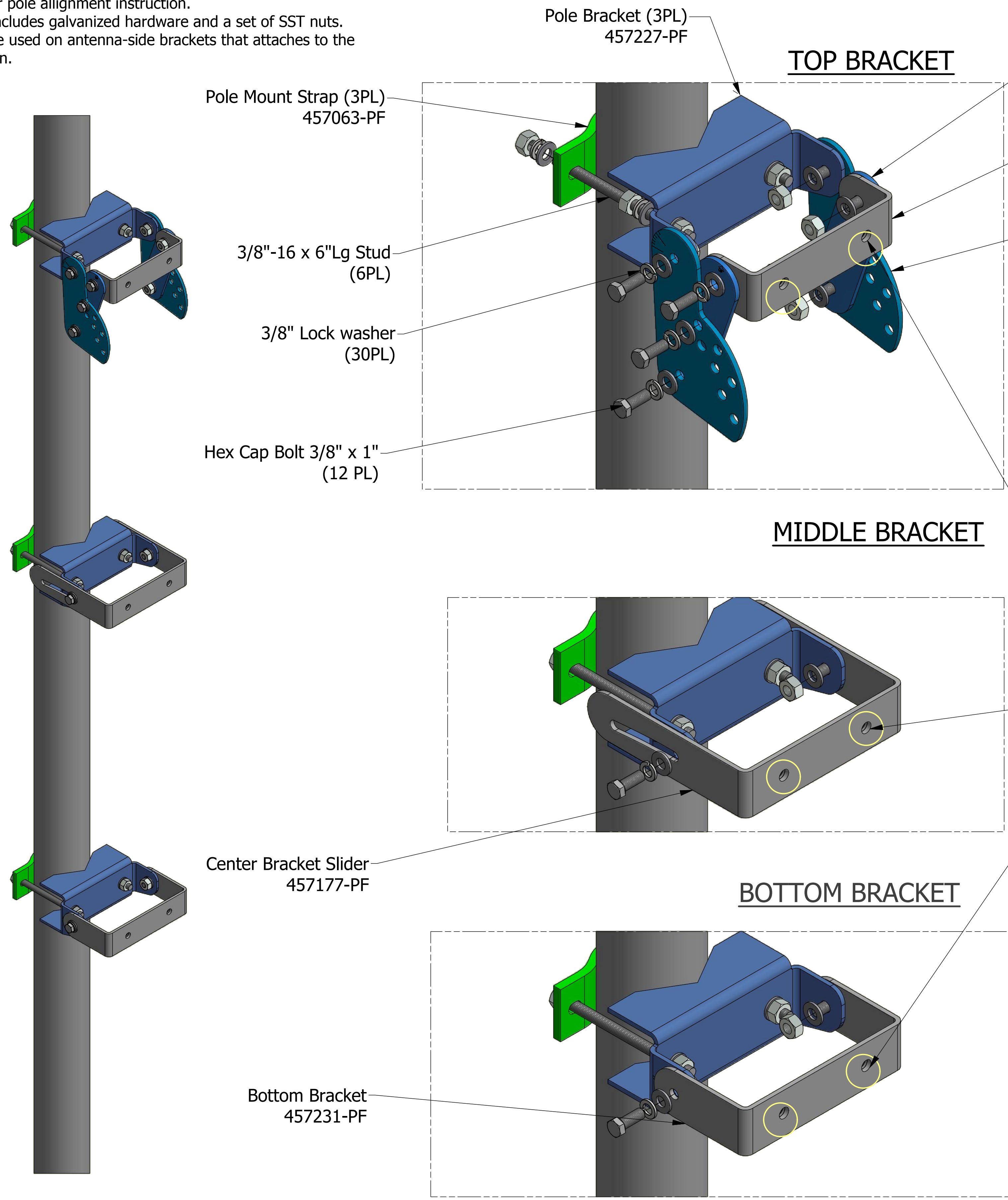
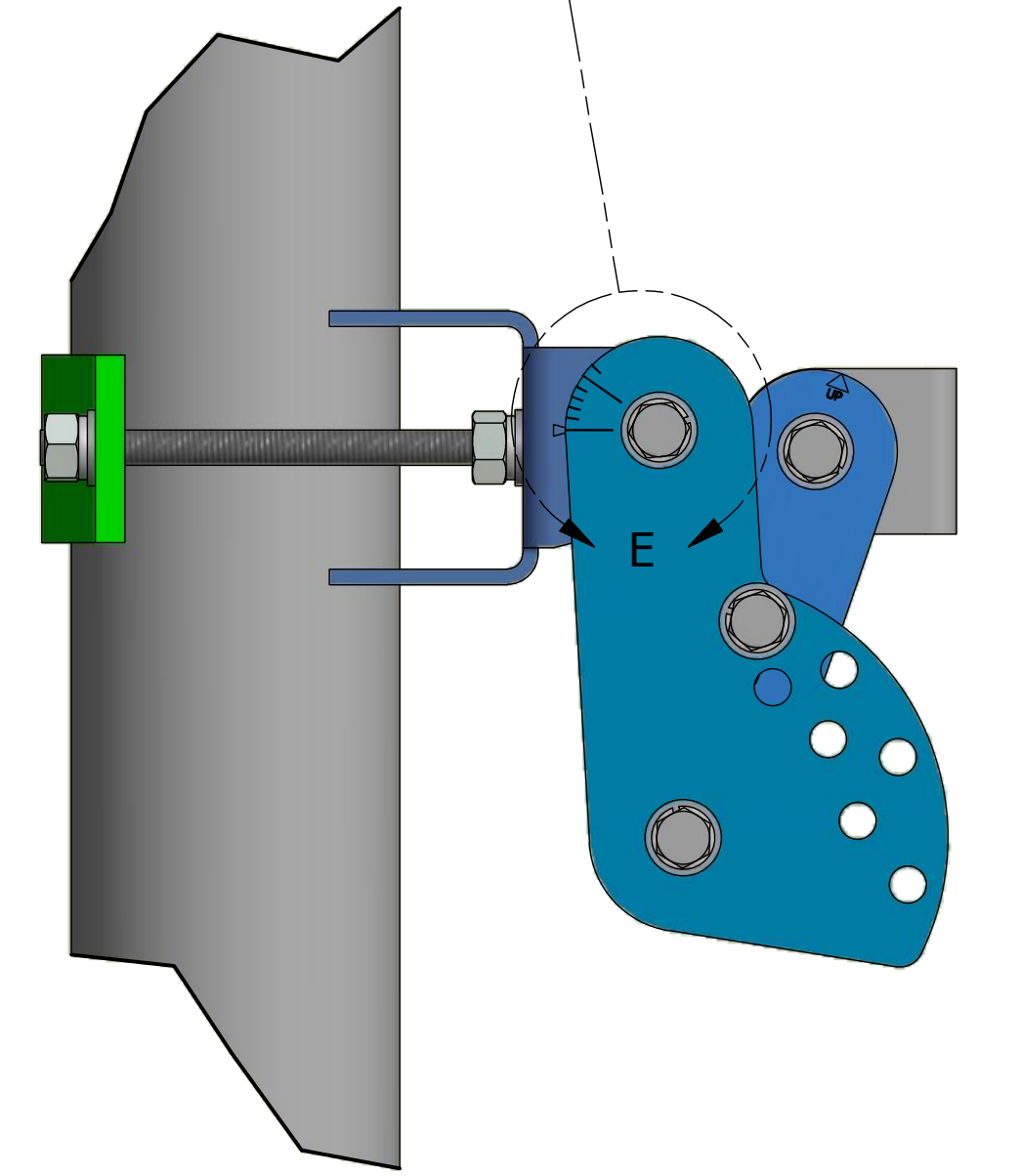
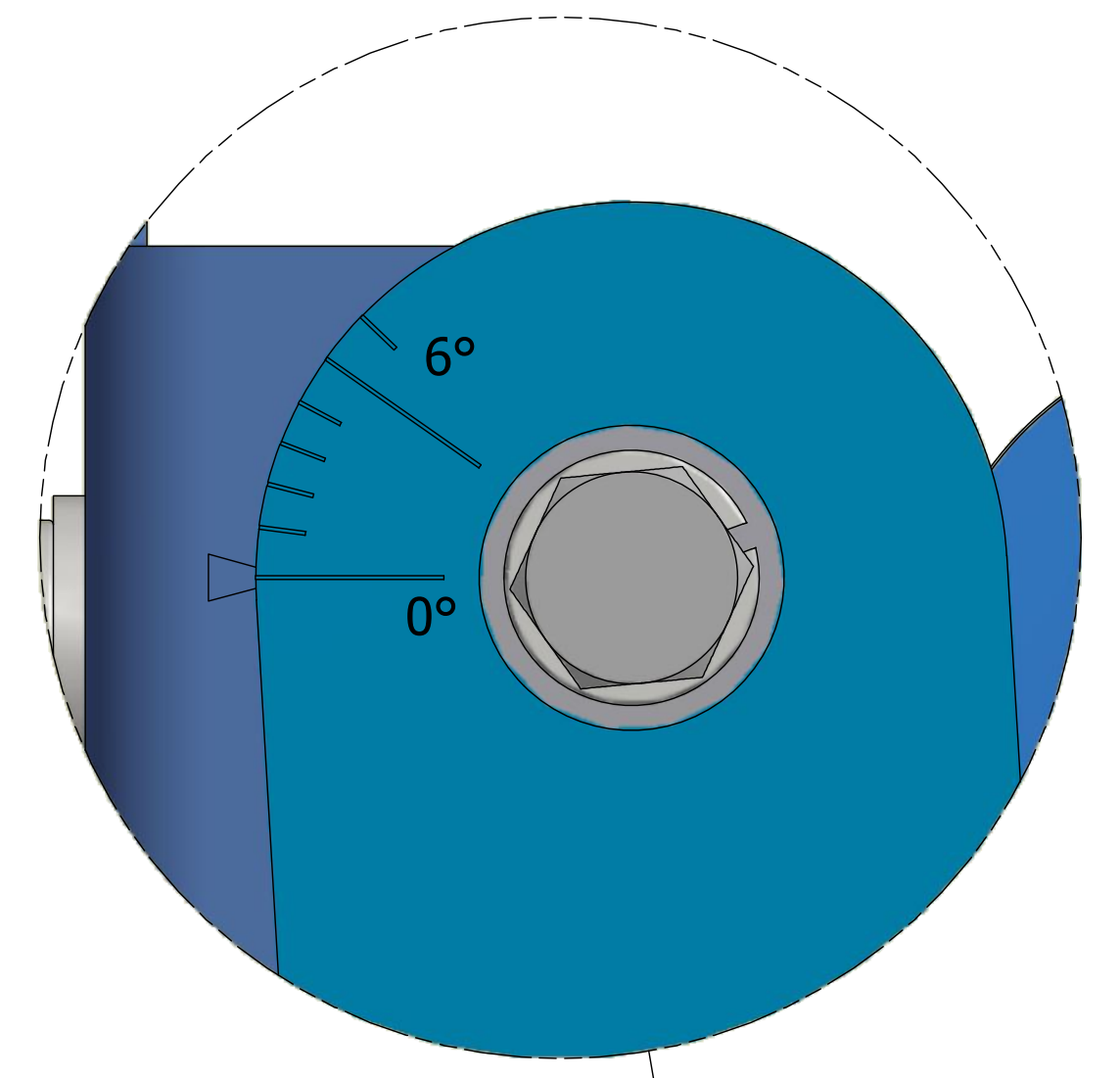


919032 BRACKET KIT, INSTALLATION, 3-POINT, 6DEG D-TILT

- NOTES:
 1. All hardware to be torqued to 15 ft-lbs after mechanical downtilt is set.
 2. See Detail "D" for pole alignment instruction.
 3. The bracket kit includes galvanized hardware and a set of SST nuts. SST nuts must be used on antenna-side brackets that attaches to the antenna as shown.



- Linkage Arm (2PL) 457228-PF
- Antenna Top Bracket 457229-PF
- Linkage 6deg (2PL) 457101-PF



DETAIL D

Must USE SST Nuts to attach Antenna-side brackets to the Housing. (6 PL)

PRIOR TO MOUNTING THE ANTENNA TO THE POLE:
 - ALIGN TICK MARK ON BRACKET TO 0° LINE OF LINKAGE ARM AND TIGHTEN HARDWARE. THIS WILL ASSURE PROPER ALIGNMENT OF BRACKET TO POLE.

UNLESS OTHERWISE SPECIFIED DIMENSIONS ARE IN INCHES TOLERANCES ON .XXXX ±.005 .XX ±.02 .XXX ±.010 .X ±.1 ANGLES ±.5°	NAME	DATE	JMA WIRELESS 2236-D LAKESIDE BLVD EDGEWOOD, MARYLAND 21040 410-612-0080 FAX: 410-612-0336
	DRAWN T KIRBY	3/18/2015	
THIRD ANGLE PROJECTION	CHECKED		TITLE INSTALLATION INSTRUCTIONS
	APPROVED		SIZE DWG NO. 819032-AD REV E.1 SCALE FILE SH OF 1