

Rev.	Description	EC number
A	Release	ECO-02794

## DX18FRO265-01 Panel Antennas

Instructions for  
Wall and Tri-Sector  
Mount Antennas

P/N 81900530-01



JMA Wireless World  
Headquarters

140 Cortland Avenue  
Syracuse, NY 13202  
USA

[www.jmawireless.com](http://www.jmawireless.com)  
+1 888-201-6073



# DX18FRO265-01 Panel Antennas

Instructions for Wall and Tri-Sector Mounting



This is the installation guide for the Wall and Tri-Sector Mounted DX18FRO265-01 Antenna.

Hardware provided		
Item #	Description	Qty. in kit
1	WALL MOUNT BRACKET, DX18	1
2	Pole MOUNT/Tilt BRACKET, DX18	1
3	SCREW, BH-T30, 18-8 SS, M6-1.00x20	4
4	WASHER, FLAT, STEEL, 1.8, M6	4
5	WASHER, LOCK, 18-8SS, M6	4
6	Vibration-Resistant Worm-Drive Clamps	4
7	STADIUM MOUNTING BRACKET KIT, ROTATIONAL	1

**NOTE:** These item numbers refer to *Figures 1, 2, 3, 5, 6, & 7.*

Table 1: Hardware provided with the antenna

Tool List (not provided)	
Torx Driver, T30 160 mm Long	Level
Plumb line	Tape measure
Marker	Anchor or foundation bolts

Table 2: Tool List

Torque		
Tool (not provided)	Hardware	Torque
Torx Driver, T30 160 mm Long	SCREW, BH-T30, 18-8 SS, M6-1.00x20	14 Nm

Table 3: Torque specification

Items 1, 3, 4, & 5 come pre-installed on the antenna. Items 2, 6, & 7 are provided with the antenna.

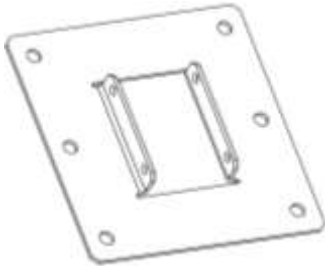


Figure 1: Item 1 - WALL MOUNT BRACKET, DX18

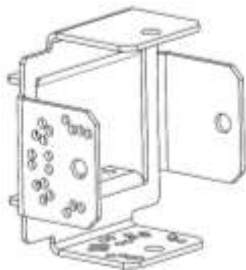


Figure 2: Item 2 - Pole MOUNT/Tilt BRACKET, DX18

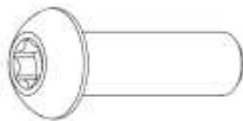


Figure 3: Item 3 - SCREW, BH-T30, 18-8 SS, M6-1.00x20

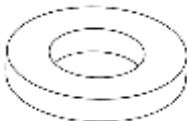


Figure 4: Item 4 - WASHER, FLAT, STEEL, 1.8, M6

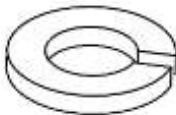


Figure 5: Item 5 - WASHER, LOCK, 18-8SS, M6



Figure 7: Item 7 - STADIUM MOUNTING BRACKET KIT, ROTATIONAL



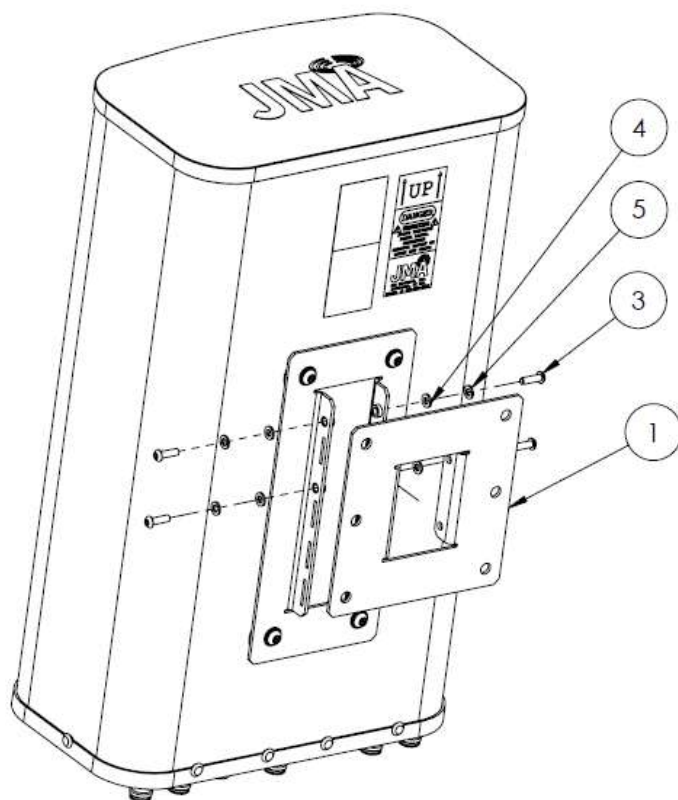
Figure 6: Item 6 - Vibration-Resistant Worm-Drive Clamps

# DX18FRO265-01 Panel Antennas

Instructions for Wall and Tri-Sector Mounting

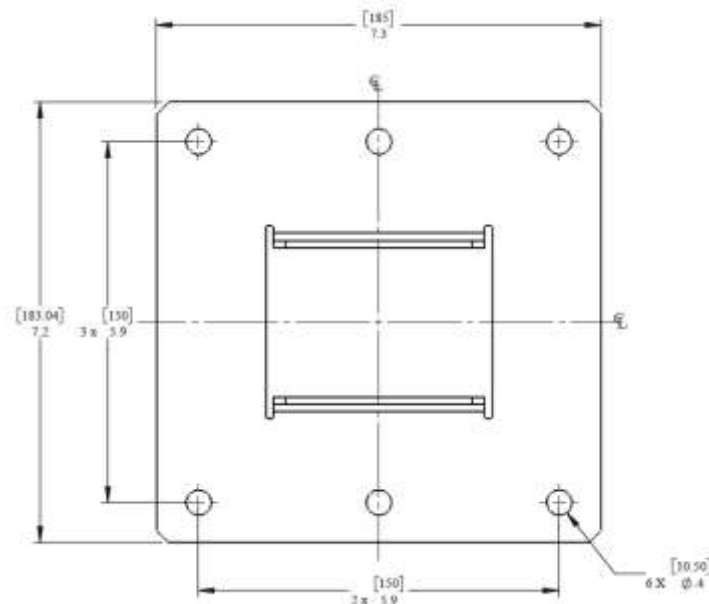
## Wall Mounting Assembly Instructions

1. Remove #1 WALL MOUNT BRACKET, DX18 from the antenna as shown in *Figure 8*.
2. Mark the holes on the wall with respect to the holes provided on the mounting bracket as per *Figure 9*.
3. Install fixing hardware like anchor bolts / foundation bolts (not provided) to the wall. Bolt should be less than 10 mm diameter.
4. Install the wall mount bracket to the wall as shown in *Figure 10*.

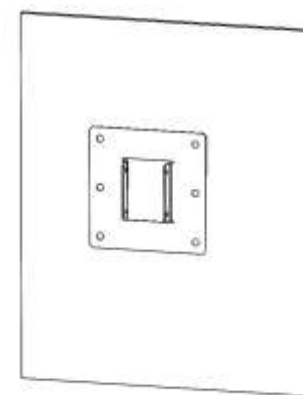


**Figure 8: Remove wall mount bracket**

4



**Figure 9: Bracket Fixing holes details**



**Figure 10:  
Bracket fixed  
to the wall**

5

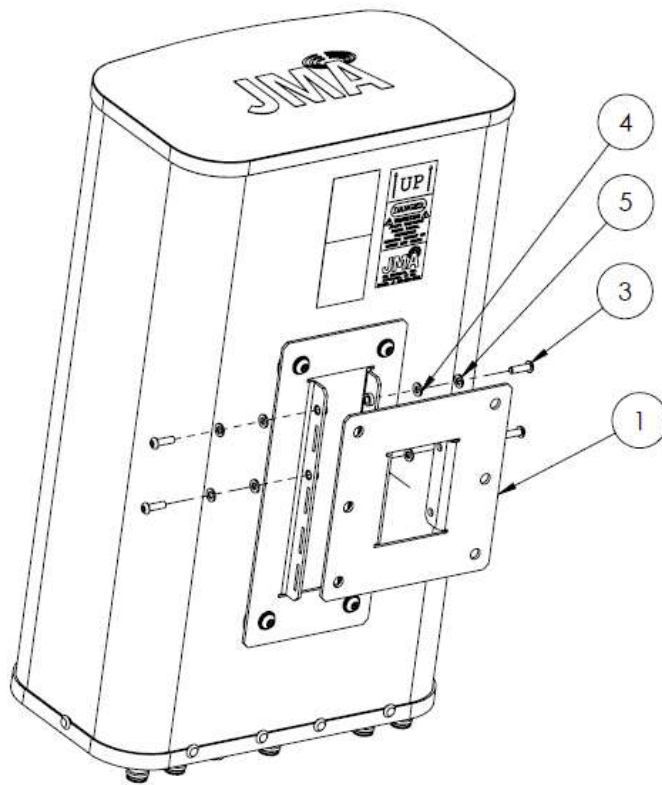
# DX18FRO265-01 Panel Antennas

Instructions for Wall and Tri-Sector Mounting



## Wall Mounting Assembly Instructions, continued

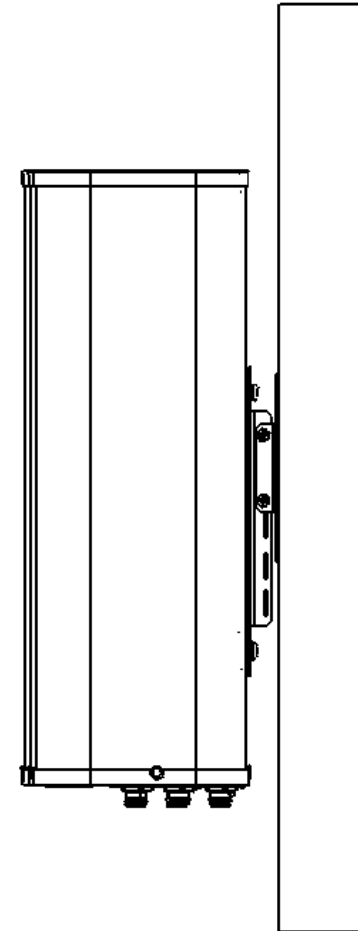
5. Place the antenna's external brackets onto the installed wall bracket, matching the mounting holes. Make sure the connector side of the antenna is downward facing.
6. Insert the fasteners 3, 4, 5 as shown in *Figure 11*.
7. Tighten the screws on the left and right side equally. **Do not tighten one side fully and then the next.** Follow the same for the top and bottom fasteners. Torque to 14 Nm.
8. The finished installation is shown in *Figure 12*.



*Figure 11: Fastener assembly steps.*

6

## TOP SIDE



## BOTTOM (CONNECTOR) SIDE

*Figure 12: Fastener assembly steps.*

7

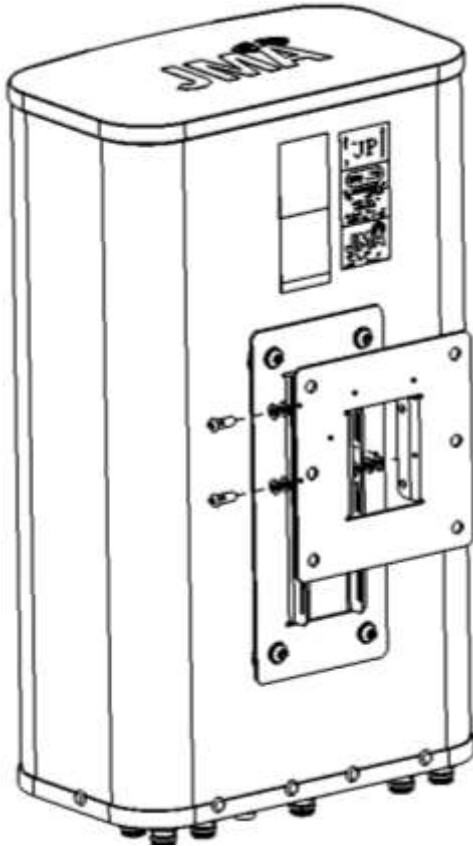
# DX18FRO265-01 Panel Antennas

Instructions for Wall and Tri-Sector Mounting



## Pole Mounting Tri-Sector Assembly Instructions

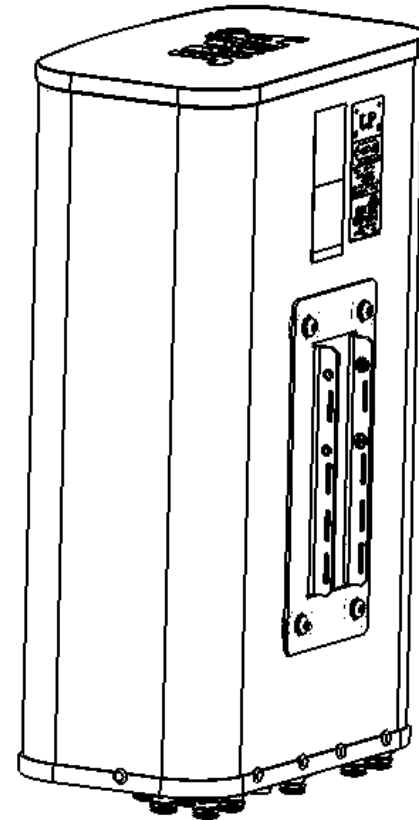
1. Remove the #1 WALL MOUNT BRACKET, DX18 from the antenna as shown in *Figure 13*. After removing the bracket, the antenna looks like *Figure 14*.



**Figure 13: Remove the Wall mount bracket.**

8

## Antenna without wall mount bracket.



**Figure 14: Antenna with External Bracket**

9

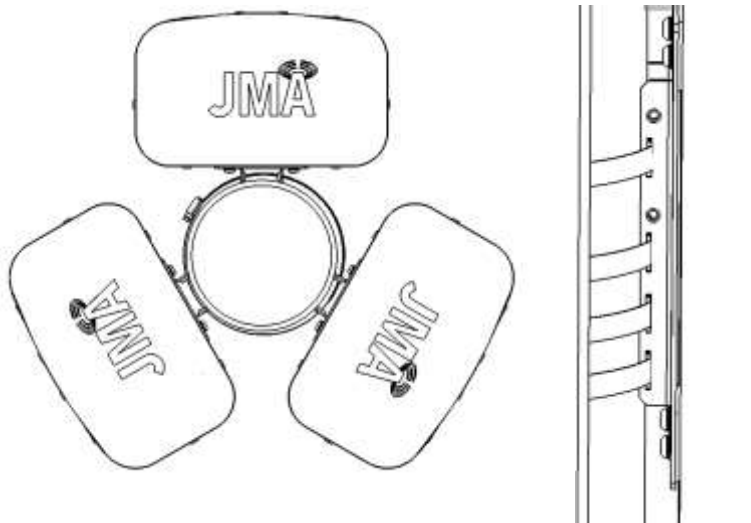
# DX18FRO265-01 Panel Antennas

Instructions for Wall and Tri-Sector Mounting



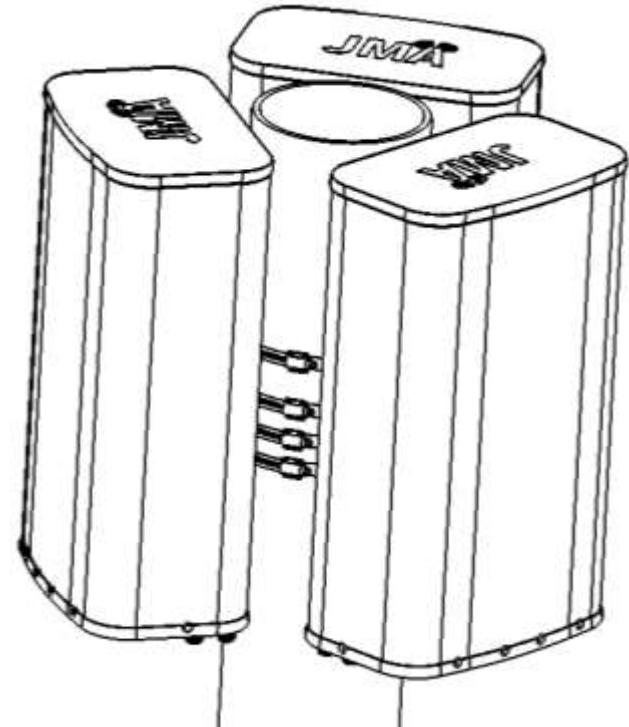
## Pole Mounting Tri-Sector Assembly Instructions, continued

2. Pass all four Vibration-Resistant Worm-Drive clamps through the slots of the three antennas as shown in *Figure 15*.
3. Assemble them to the pole.
4. Tighten the worm-drive clamp screw with appropriate tools as shown in *Figure 16*.



*Figure 15: Antenna with external bracket and worm-drive clamp*

## TOP SIDE



## BOTTOM (CONNECTOR) SIDE

*Figure 16: Finished installation.*

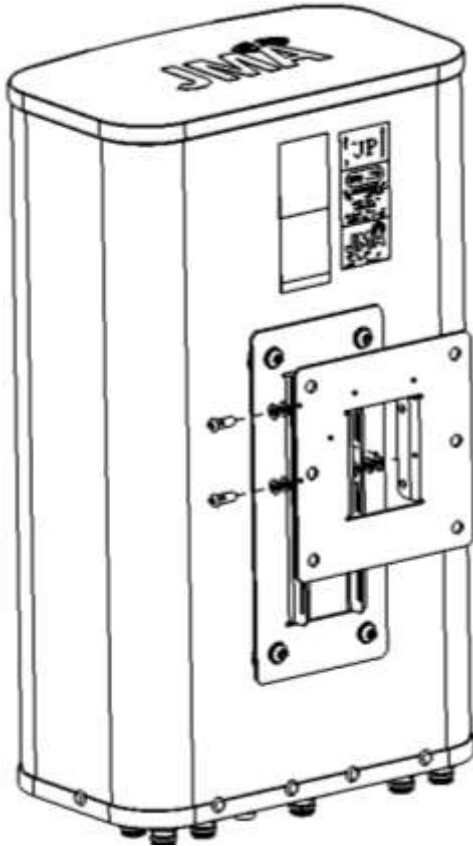
# DX18FRO265-01 Panel Antennas

Instructions for Wall and Tri-Sector Mounting



## Pole Mounting Tilt Bracket Assembly Instructions

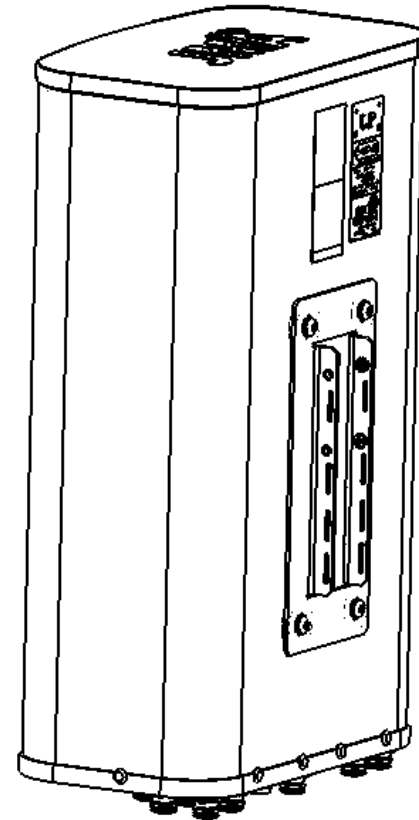
1. Remove the #1 WALL MOUNT BRACKET, DX18 from the antenna as shown in *Figure 17*. After removing the bracket, the antenna looks like *Figure 18*.



**Figure 17: Remove the Wall mount bracket.**

12

## Antenna without wall mount bracket.



**Figure 18: Antenna with External Bracket**

13

# DX18FRO265-01 Panel Antennas

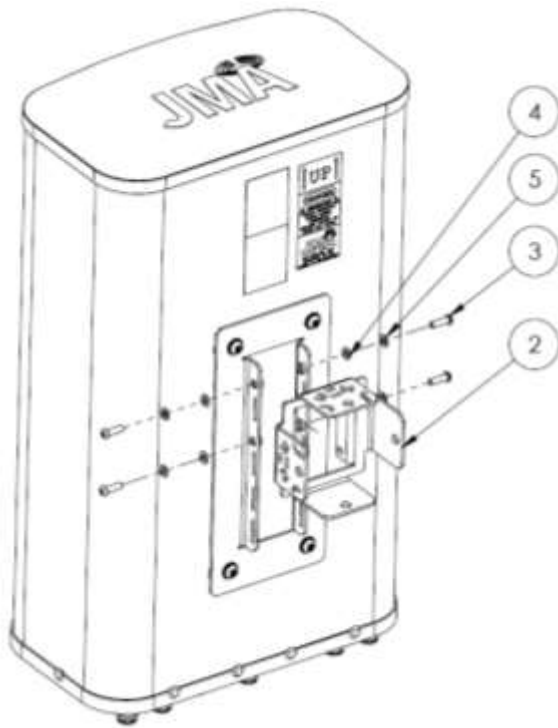
Instructions for Wall and Tri-Sector Mounting



## Pole Mounting Tilt Bracket Assembly Instructions, continued

2. Assemble the pole mount tilt bracket to the antenna with fasters 3, 4, 5, as shown in *Figure 19*.
3. Tighten the screws on the left and right side equally. **Do not tighten one side fully and then the next.** Follow the same for the top and bottom fasteners. Torque to 14 Nm.
4. The finished installation is shown in *Figure 20*.

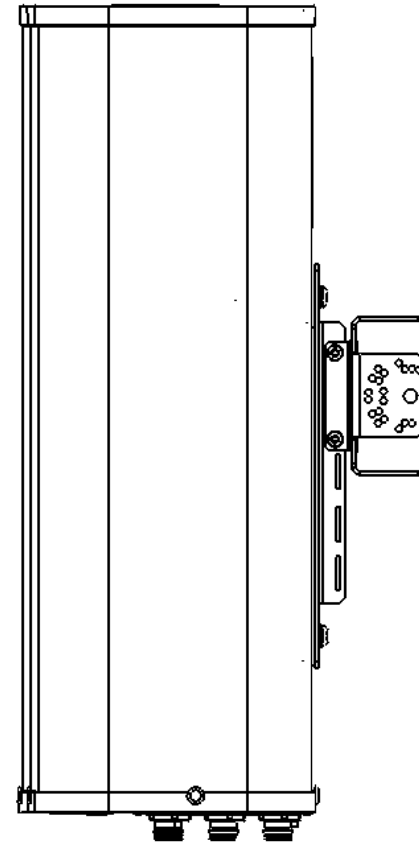
Next, for mounting instructions for bracket kit 91900324, please refer to <https://jmawireless.com/81900511/>.



*Figure 19: Pole mount tilt bracket assembly*

14

## TOP SIDE



## BOTTOM (CONNECTOR) SIDE

*Figure 20: Antenna with pole mount tilt bracket.*

15