

Rev.	Description	EC number
A	Initial release	ECO-02794

DX10FRO260-20, -26 Panel Antennas

Instructions for
Wall, Pole, and Tri-Sector
Mount Antennas

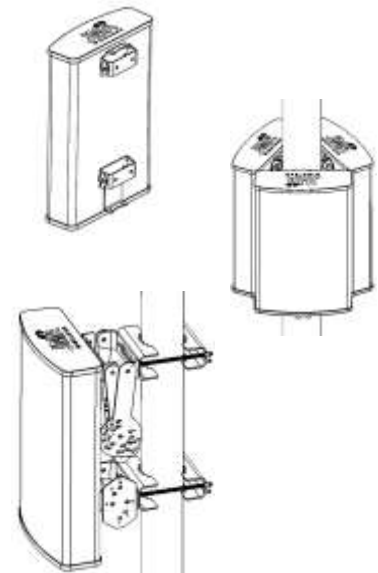
P/N 81900529-01



JMA Wireless World
Headquarters

140 Cortland Avenue
Syracuse, NY 13202
USA

www.jmawireless.com
+1 888-201-6073



DX10FRO260-20/26 Panel Antennas

Instructions for Wall, Pole and Tri-Sector Mounting



This is the installation guide for the Wall, Pole, and Tri-Sector Mounted DX10FRO260-20, -26 antennas. Below are the parts included with each kit.

Bracket kits needed per antenna model			
Mounting Type	Ant. QTY	Bracket PN	Bracket QTY
Wall	1	91900342-01	1
Pole	1	91900318-01	1
		91900342-01	1
Tri-Sector	3	91900339-01	1

Table 1: Bracket kits to use

Note: The Wall/Link Brackets kit (91900342-01) and the Pole Mount Kit (91900318-01) will be included with the antenna. The Tri-Sector Kit (91900339-01) is purchased separately.

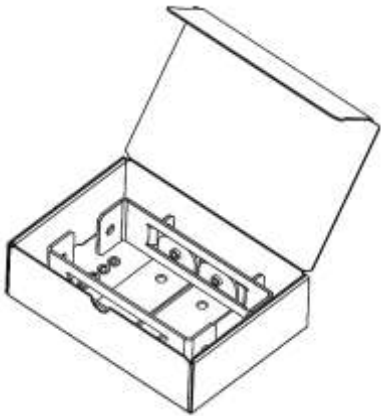


Figure 1: The Wall/Link Brackets kit (91900342-01)

Below are the parts in the 91900342-01 kit included with the antenna.

91900342-01		
Item #	Description	Qty. in kit
1	WALL MOUNT BRACKET, DX10	2
2	DX10 MX LINK BRACKET, NARROW	1
3	DX10 MX LINK BRACKET, WIDE	1
4	WASHER, LOCK, 18-8SS, M6	5
5	WASHER, FLAT, STEEL, 1.8, M6	5
6	SCREW, BH-T30, 18-8 SS, M6-1.00x20	5
NOTE: These item numbers refer to Figures 1, 2, 3, 4, 5, and 6.		

Table 2: Contents of the kit

For part details of 91900318-01, refer to manual <https://jmawireless.com/81900507/>.

For part details of 91900339-01, refer to manual <https://jmawireless.com/81900527-01/>.

Other key details:

Top and bottom external brackets are preinstalled on antennas; removal voids product warranty.

The Wall/Link and Pole bracket comes with the antenna, but separately packed into its box.

DX10FRO260-20/26 Panel Antennas

Instructions for Wall, Pole and Tri-Sector Mounting



Tool List (not provided)	
Torx Driver, T30 160 mm Long	Level
Plumb line	Tape measure
Marker	Anchor bolts (4)

Table 3: Tool List

Tool (not provided)	Hardware	Torque
Torx Driver, T30 160 mm Long	SCREW, BH-T30, 18-8 SS, M6-1.00x20	14 Nm

Table 4: Torque specification

91900342-01 bracket details

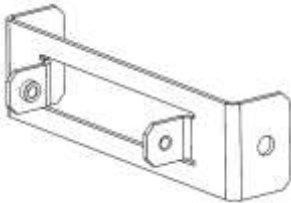


Figure 2: Item 2 - DX10 MX LINK BRACKET, NARROW

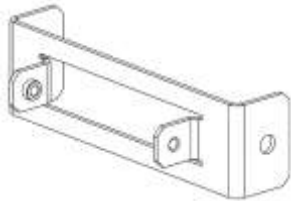


Figure 3: Item 3 - DX10 MX LINK BRACKET, WIDE

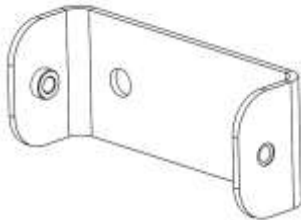


Figure 4: Item 1 - WALL MOUNT BRACKET, DX10

Provided hardware

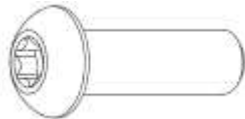


Figure 5: Item 6 - SCREW, BH-T30, 18-8 SS, M6-1.00x20

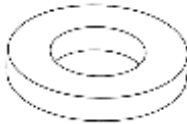


Figure 6: Item 5 - WASHER, FLAT, STEEL, 1.8, M6

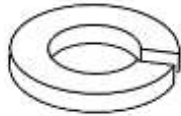


Figure 7: Item 4 - WASHER, LOCK, 18-8SS, M6

DX10FRO260-20/26 Panel Antennas

Instructions for Wall, Pole and Tri-Sector Mounting



Wall Mounting Assembly Instructions

1. Install Item #1 WALL MOUNT BRACKETS, DX10 to the wall with anchor bolts (not included). Bolts should be less than 10 mm diameter. See *Figures 8 & 9*.
2. Maintain a pitch of 398 mm from the top of the first bracket to the top of the second bracket.

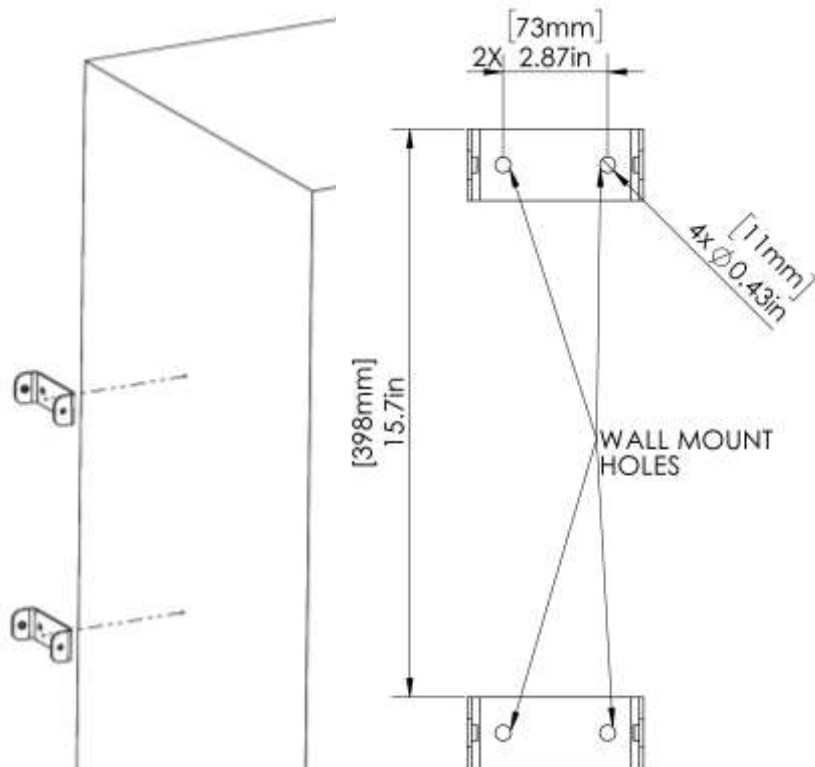


Figure 8: WALL MOUNT BRACKETS, DX10 assembled to a wall.

Figure 9: WALL MOUNT BRACKETS Hole pitch

3. Place the antenna's external brackets onto the installed wall brackets, matching the mounting holes. Make sure the connector side of the antenna is downward facing.
4. Insert the fasteners 4, 5, 6 as shown in *Figure 10* below.
5. Tighten the screws on the left and right side equally. **Do not tighten one side fully and then the next.** Follow the same for the top and bottom fasteners. Torque to 14 Nm.

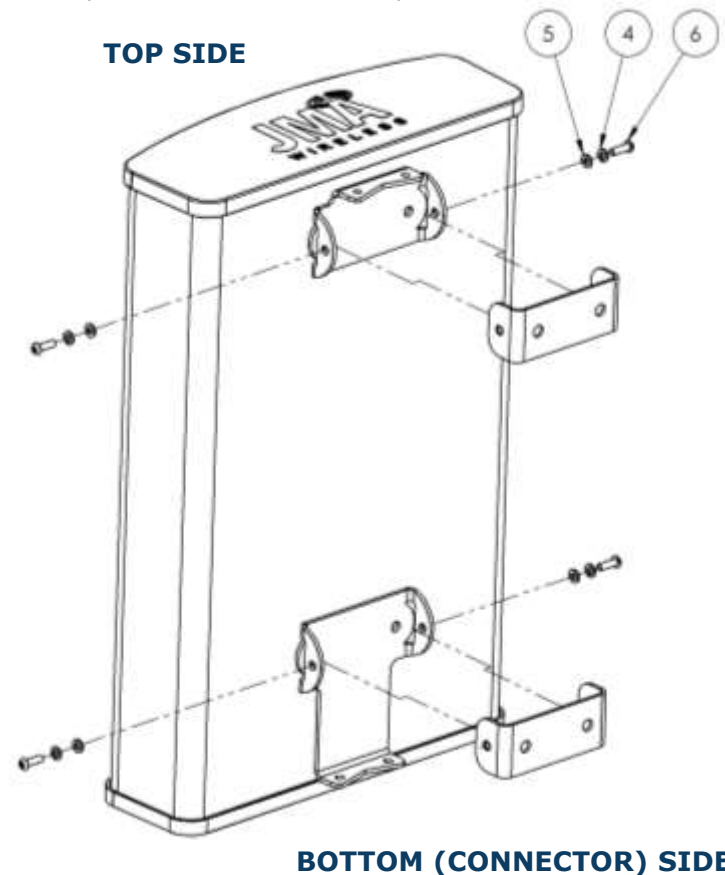


Figure 10: Fastener assembly steps.

DX10FRO260-20/26 Panel Antennas

Instructions for Wall, Pole and Tri-Sector Mounting

Pole Mounting Assembly Instructions

1. Install Item #2 DX10 MX LINK BRACKET, NARROW, to the top external bracket of the antenna and secure it with the fasteners 4, 5, 6 as represented in *Figure 11*.
2. Install Item #3 DX10 MX LINK BRACKET, WIDE, to the bottom external bracket of the antenna and secure it with the fasteners 4, 5, 6 as represented in *Figure 11*.
3. Tighten the bolts on the left and right side equally. **Do not tighten one side fully and then the next.** Follow the same for the top and bottom fasteners. Torque to 14 Nm.

Next, please follow assembly instructions at <https://jmawireless.com/81900507/> for pole mounting. (Except regarding the bracket-to-bracket pitch. Refer to Page 10.)

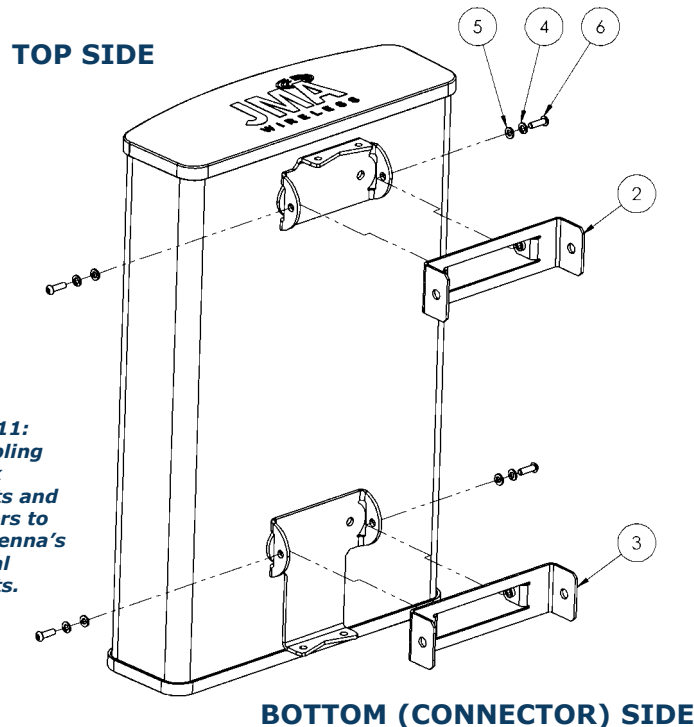


Figure 11:
Assembling
the link
brackets and
fasteners to
the antenna's
external
brackets.

4. Make sure that the face of the brackets are parallel to the antenna back face. See *Figure 12*.

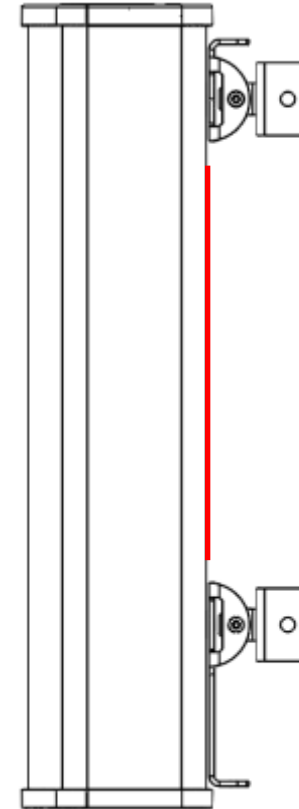


Figure 12: The bracket's face is parallel to the antenna's back face.

DX10FRO260-20/26 Panel Antennas

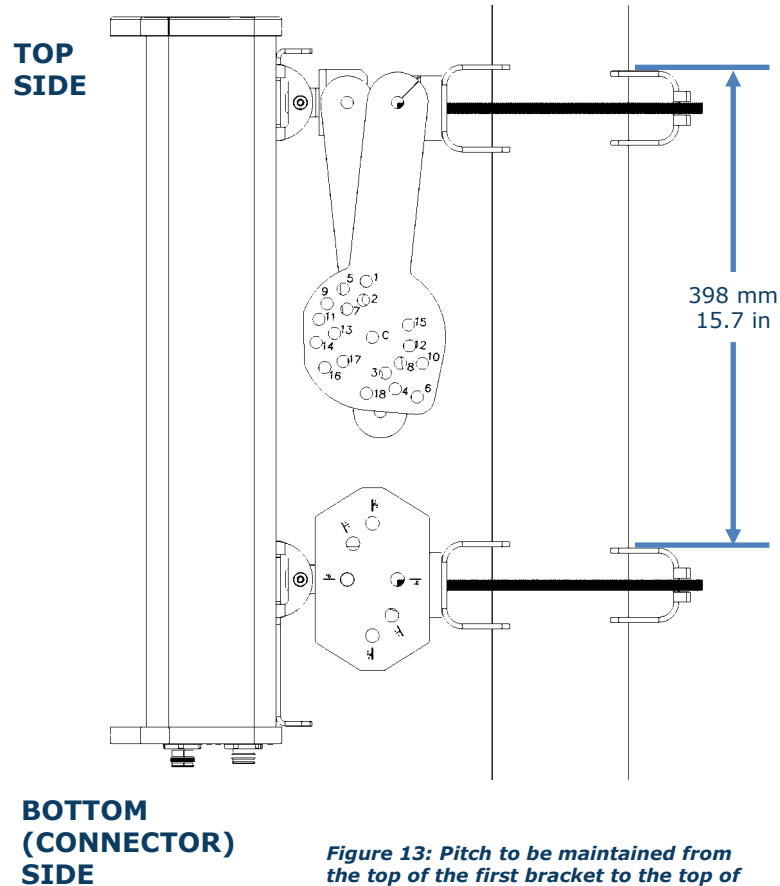
Instructions for Wall, Pole and Tri-Sector Mounting



Pole Mounting Assembly Instructions, continued

- Maintain a pitch of 398 mm from the top of the first bracket to the top of the second bracket. See *Figure 13*.

Important: Do not follow the pitch given in the <https://jmawireless.com/81900507/> manual. Please follow the pitch defined in this guide.



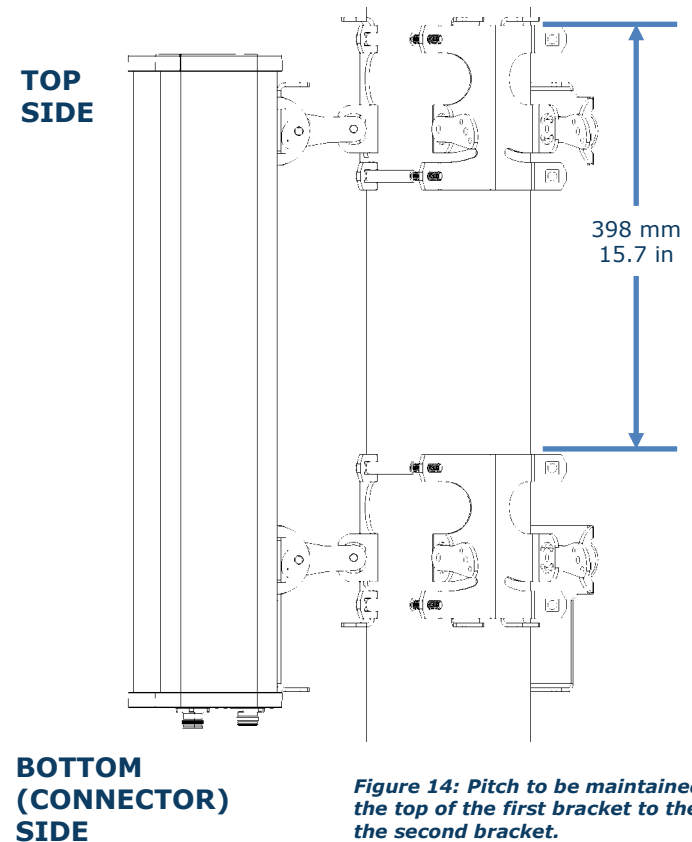
10

Tri-Sector Mounting Assembly Instructions

Please follow the assembly instructions at <https://jmawireless.com/81900527-01/> for Tri-Sector mounting.

Note: Maintain a pitch of 398 mm from the top of the first bracket to the top of the second bracket as shown in *Figure 14*.

Important: Do not follow the pitch given in the <https://jmawireless.com/81900527-01/> manual. Please follow the pitch defined in this guide.



11