

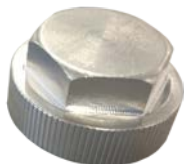
# JMA Weather Protection System™

## PC-4M Protective Cap for Unused 4.3-10 Female Ports

### Materials



WPS-4F  
port seal



Port cap



TQ-78-F8  
torque wrench

### Step 1: Install port seal



Place the port seal onto the antenna or device female port.

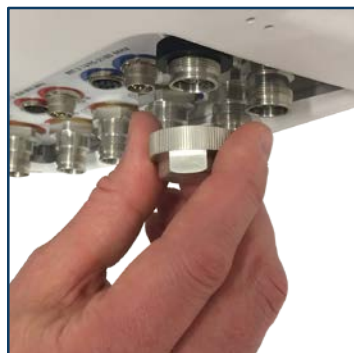


Install the port seal, with text "This side away from nut" toward antenna port or device.



Properly installed port seal, positioned just past the threads.

### Step 2: Connect and torque port cap



Connect the port cap to the antenna port or device, and hand tighten.



Torque the connection to 8 lbf-ft using the TQ-78-F8 torque wrench.



Properly installed PC-4MT.