

JMA Weather Protection System™

For 1/2" Connections to Antenna or Device



Materials (all sold separately)



WPS-DF
(for antenna)



WPS-4A or WPS-4S
(for connectors)



JMA 1/2" DM connector



RDCUTTER



TQ-114-F18 torque wrench

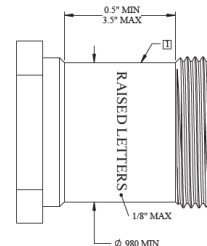
Step 1: Install WPS-4A or WPS-4S and 1/2" connector



Prior to cable preparation, slide the WPS-4A or WPS-4S onto the 1/2" cable 6-12 inches from the end.



Prep the 1/2" cable to install the JMA compression connector. Refer to the appropriate 1/2" connector installation instructions.

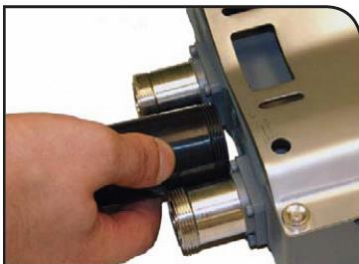


Compatible port dimensions

1

SURFACE SHOULD BE FREE OF FLATS, THREADS, OR RAISED LETTERING WHOSE CHARACTERS ARE TALLER THAN 1/8".

Step 2: Cut WPS-DF



Measure the WPS-DF from the end of the port to the beginning of the threads as shown. Use your thumb to mark a cut line.



Align the blade of the RDCUTTER to the thumb mark indicating the cut length. Using one firm cutting motion, cut the WPS-DF to the proper length.



Properly measured WPS-DF.

JMA Weather Protection System™

For 1/2" Connections to Antenna or Device



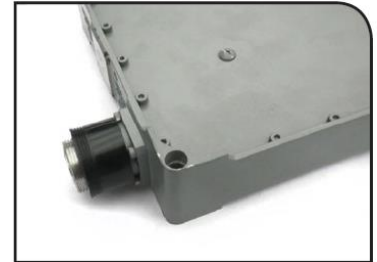
Step 3: Install WPS-DF



Place the cut WPS-DF onto the antenna or device female port.



Ensure that the WPS-DF is properly placed on the antenna or device port, positioned just past the threads.



Properly installed WPS-DF.

Step 4: Connect and torque interface



Connect the 1/2" connector to the antenna port or device, and hand-tighten.



Torque the connection to 18 lbf-ft using the TQ-114-F8 torque wrench.



Properly mated connector.

Step 5: Install WPS-4A or WPS-4S



Slide the WPS-4A or WPS-4S over the 1/2" connection, making sure to overlap the port seal.



Completed installation of the JMA Weather Protection System.

Proper port seal alignment

Ribs to be towards threads and should not overlap onto threads

Seal should clear any shoulder or step on port

